

# RG-AP710 Quick Start Guide



## Package Contents

- Wireless Access Point
- Mounting Bracket
- Locking Plate
- Anchors
- Self-tapping Screws
- This Quick Start Guide

## Before You Begin

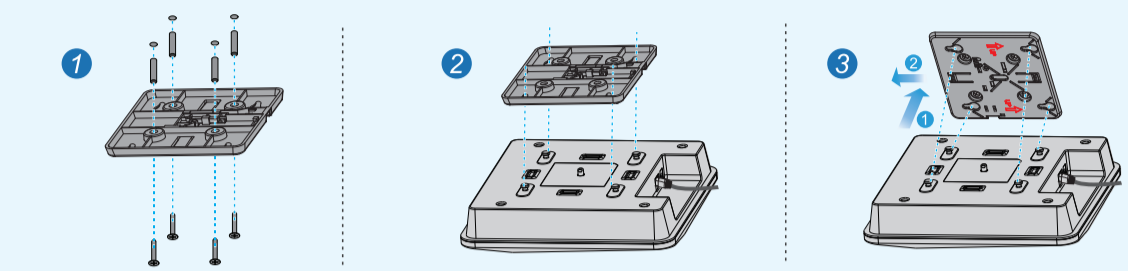
Before you begin, please prepare the following tools for the installation:

<b>Common Tools</b>	Phillips screwdriver, related copper and fiber cables, bolts, diagonal pliers, cable ties
<b>Special Tools</b>	Wire stripper, crimping pliers, RJ-45 crimping pliers, punch down tool
<b>Meter</b>	Multimeter, Bit Error Rate Tester (BERT)

The listed tools are not included in the package.

## Mounting the Access Point

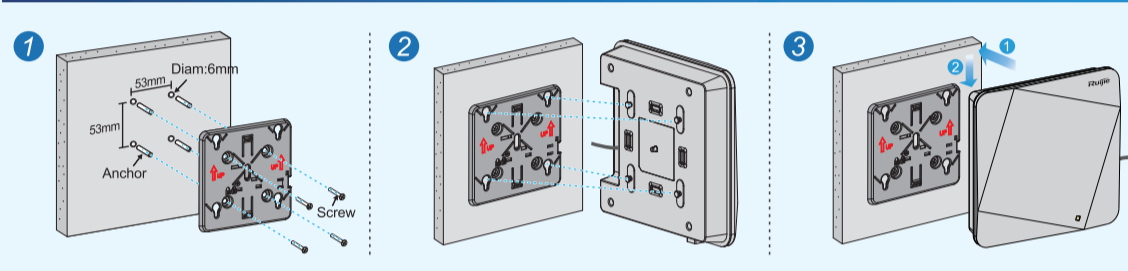
### 1.1 Ceiling Mount



**Step1:** To fix the bracket to the ceiling, first tap the wall anchors into the holes, align the holes on the mounting bracket to the wall anchors, then drive the screws through the bracket into the anchors.  
**Step2:** Align the square feet on the rear of the access point over the mounting holes on the bracket.  
**Step3:** Slide the access point onto the bracket in the reverse direction of the arrow printed on the mounting bracket until it clicks into place.

- The Ethernet cables must be installed before mounting the access point onto the bracket.
- The access point can be installed in any direction on the mounting bracket depending on the routing of your Ethernet cable.
- The square feet should fit easily into the mounting slots. Do not forcibly push the access point into the slots.
- After installation, verify that the access point is securely fastened.

### 1.2 Wall Mount

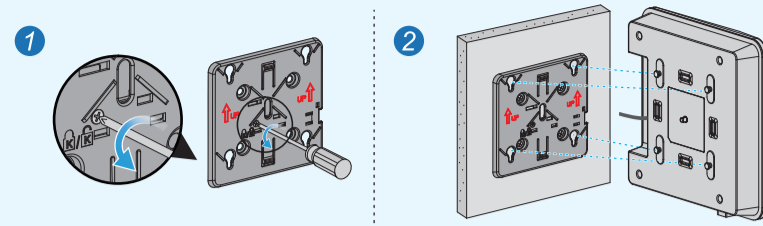


**Step1:** To fix the bracket onto the wall, tap the wall anchors into the holes, then drive the screws through the mounting bracket into the anchors.  
**Step2:** Align the square feet on the rear of the access point over the mounting holes on the bracket.  
**Step3:** Slide the access point onto the bracket in the reverse direction of the arrow printed on the mounting bracket until it clicks into place.

- The square feet should fit easily into the mounting slots. Do not forcibly push the access point into the slots.
- After installation, verify that the access point is securely fastened.

## Mounting the Access Point

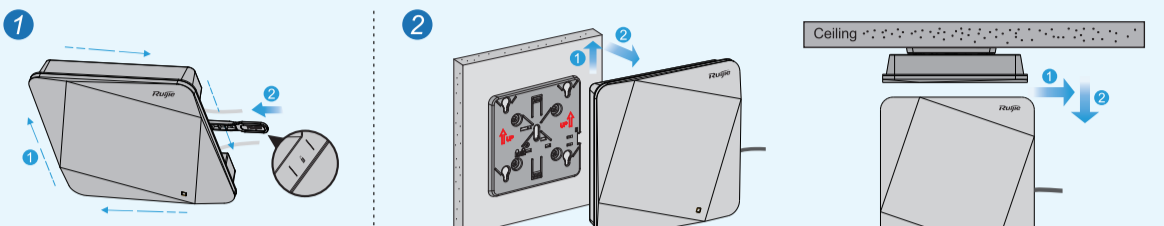
### (Optional) Securing the Access Point



**Step1:** Loosen the screw on the mounting bracket and enable the hidden lock.  
**Step2:** Align the square feet on the rear of the access point over the mounting holes on the bracket. Then slide the access point on the mounting bracket in the reverse direction of the arrow printed on the mounting bracket until it clicks into place.

- The Ethernet cables must be installed before mounting the access point onto the bracket.

### Removing the Access Point

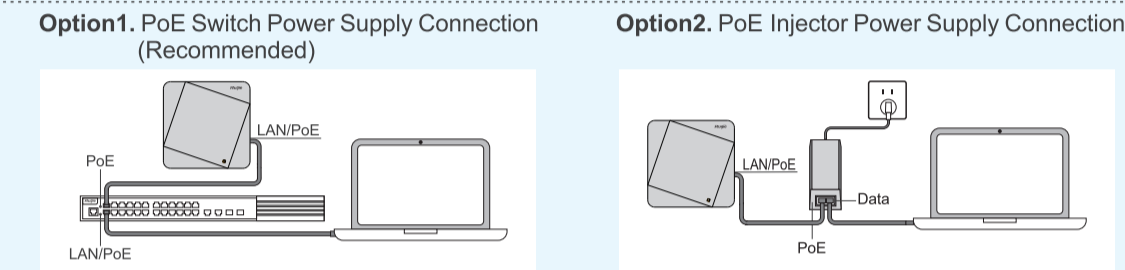


**Step1:** Insert the key for unlocking.  
**Step2.1:** If the access point is installed on the wall, push it upward and away from the bracket to the direction of the LAN port.  
**Step2.2:** If the access point is installed on the ceiling, push it sideward and attempt to push it along the direction of the LAN port.

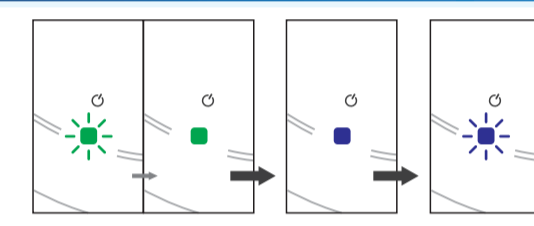
### Powering the Access Point

The access point supports the following two power supply modes. The following examples illustrate how to power on and connect the access point.

- The device is not equipped with the power module upon delivery. You can select an appropriate power supply mode based on the deployment requirements.



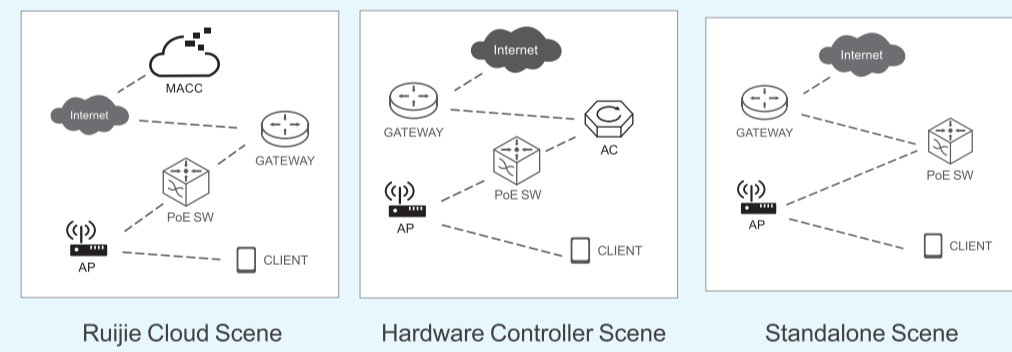
### Wait until the LED turns to solid blue



The access point startup takes around 3 minutes. The LED blinks green at first, then turns to solid green when the access point is booting up. It turns to solid blue when the system is ready and it blinks blue when clients are associated to the access point. It blinks red if there is no Ethernet activity.

## Configuring the Access Point

The access point supports three modes: **MACC Mode**, **Fit AP Mode**, **Fat AP Mode**, and is applicable to the following three deployment scenes:



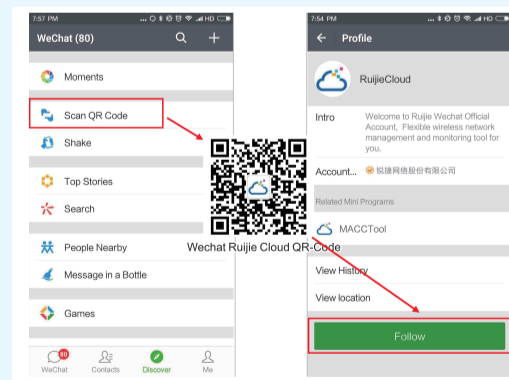
### Scene 1: Ruijie Cloud by Mobile APP (Recommended)

#### Part 1: Set up your Ruijie Cloud account

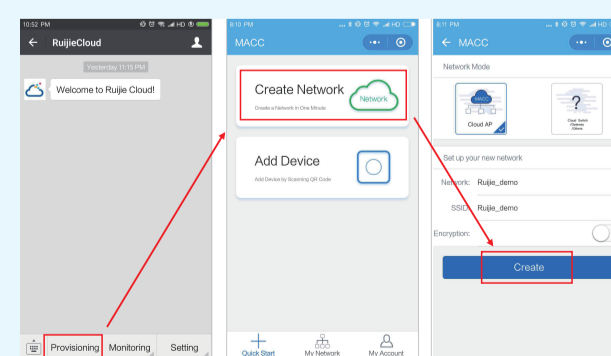
- Step1-1:** If you do have a Ruijie Cloud account, please go to <https://cloud.ruijienetworks.com>.
- Step1-2:** Click on "Sign up" to register account.
- Step1-3:** Fill out the form (valid Email address verification required). After registering an account, you can log in immediately.

#### Part 2: Set up your access point

**Step2-1:** Power on the access point, and make sure that the access point can obtain an IP from the DHCP server/ISP modem.

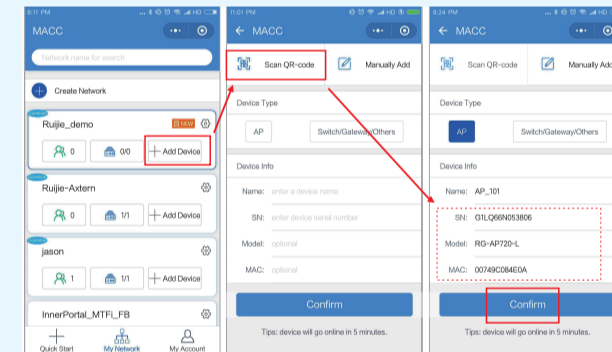


**Step2-2:** Follow the Ruijie Cloud official WeChat account by scanning the preceding QR-code. (If your mobile phone does not have the WeChat App installed, please search "WeChat" on App Store and install it on your mobile phone. Then open WeChat and click **Discover>Scan QR Code** to follow Ruijie Cloud official WeChat account.



## Configuring the Access Point

**Step2-3:** Enter the Ruijie Cloud WeChat account, bind your registered cloud account, choose **Provisioning>Quick Start / Create Network** to create a new network and default SSID.



**Step2-4:** Click **Add Device>Scan QR-code** to add the access point into the network (QR-code on the rear of the access point).

**Step2-5:** Now you can connect the SSID to enjoy the WiFi and log in to the Ruijie Cloud Web UI from <https://cloud.ruijienetworks.com> to complete advanced configuration.

### Scene 2: Hardware Controller (Optional)

Make sure the access point can obtain an IP from the DHCP server and is reachable to the IP address of controller. For more information, scan the QR-code or access the link below.

### Scene 3: Standalone

By default, an access point works in Fit AP mode with the Web service enabled. The default management address is 192.168.110.1.

- Step1:** Set the IP configuration on your computer.
  - IP address: Set the IP address in the same network segment with the management address.
  - Subnet mask: 255.255.255.0
  - Default gateway: 192.168.110.1
- Step2:** Open a Web browser window, enter the management address in the address bar and press **Enter**. For example: <http://192.168.110.1>. The Login page will be displayed.

**Step3:** Enter the default login information:  
 Username: **admin**  
 Password: **admin**

For more information, please scan the QR code or visit <https://ruijienetworks.com/support/documents/wireless>.



## Further Technical Assistance

Ruijie Networks Website: <https://www.ruijienetworks.com/>  
 Technical Support Website: <https://ruijienetworks.com/support>  
 Case Portal: <http://case.ruijienetworks.com>  
 Community: <http://community.ruijienetworks.com>  
 Technical Support Email: [service\\_rj@ruijienetworks.com](mailto:service_rj@ruijienetworks.com)  
 Skype: [service\\_rj@ruijienetworks.com](https://www.skype.com/partner/ruijienetworks.com)

For further information, please visit our website: <https://www.ruijienetworks.com>  
 Copyright © 2018, Ruijie Networks Co., Ltd. All rights reserved. Ruijie Networks reserves the rights to change, modify, transfer, or other revise this publication without notice, and the most current version of this publication shall be applicable.