

**Tenda**



All for better networking.

**A27**

AX1800 Wi-Fi 6 Range Extender

[www.tendacn.com](http://www.tendacn.com)



# A27

## AX1800 Wi-Fi 6 Range Extender

A27 is a Wi-Fi 6 range extender designed for large houses. With a 5 GHz wireless speed of up to 1201 Mbps and a 2.4 GHz wireless speed of up to 574 Mbps, it significantly increases the Wi-Fi speed compared with Wi-Fi 5 extenders. Its two 5dBi high-gain dual-band antennas can greatly increase Wi-Fi coverage. A27 features the Wi-Fi+ function, which can better build up a whole-home mesh network with Tenda Wi-Fi routers and mesh routers that support the Wi-Fi+ function as well. A27 also supports an automatic pop-up setting page and is equipped with an external smart LED indicator, which can greatly improve the user's setting experience. In addition, A27 has an external gigabit ethernet port which is used for wired connections from smart TV, PC, set-top box, PS4, and other devices, making A27 more flexible to use.

# Main Features



## Enjoy Ultra-fast Wi-Fi 6

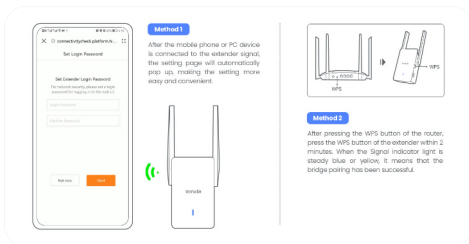
A27 supports the latest Wi-Fi 6 technology. The dual-band concurrent speed can reach 1775Mbps, which is 20% faster than the AX1500, which can better improve the Internet experience.

\*The above data is from the full-load test environment of Tenda Lab.



## Eliminate Wi-Fi Dead Zones with Strong Wi-Fi 6

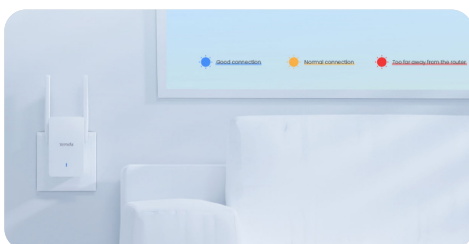
A27 is equipped with two high-gain dual-band antennas with high-quality plates, which can greatly improve the ability of Wi-Fi 6 signal reception and coverage at home so that you can enjoy high-speed internet throughout the house.



## Easy Installation in One Step

Method 1: After the mobile phone or PC device is connected to the extender signal, the setting page will automatically pop up, making the setting more easy and convenient.

Method 2: After pressing the WPS button of the router, press the WPS button of the extender within 2 minutes. When the Signal indicator light is steady blue or yellow, it means that the bridge pairing has been successful.



## Intelligent LED indicator

After the bridge is completed, smart LED indicators can help you find the best location for Wi-Fi bridge and improve the quality of signal extension.

- Blue: Good connection
- Yellow: Normal connection
- Red: Too far away from the router

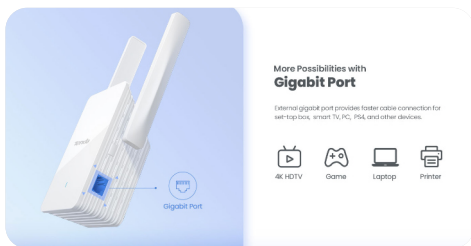
# Main Features

---



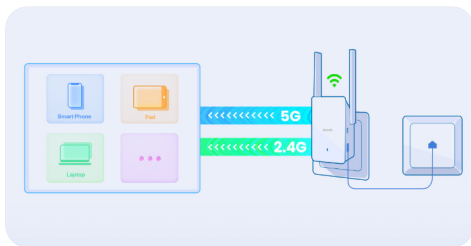
## Better Band Smartly Chosen for You

The two signal bands are unified as one and the best band is automatically chosen for you, offering you the most smooth high-speed internet connection at all times.



## More Possibilities with Gigabit Port

External gigabit port provides faster cable connection for set-top box, smart TV, PC, PS4, and other devices.



## Built-In Access Point Mode

Simply plug an Ethernet cable into its port to easily turn that wired connection into a high-speed dual-band wireless signal.

# Specification

Hardware Specification	
Interface	1*10/100/1000Mbps RJ45
Antenna Type	2 * 5dBi dual-band antennas
Button	1 * WPS Button 1 * Reset Button
LED indicator	1 * Signal LED
Power Supply	12V1A, built-in
Power Consumption	11W (max power consumption)
Dimensions	123*72*47.5mm
Wireless Features	
Wireless Standards	IEEE802.11b,IEEE 802.11g, IEEE 802.11n, IEEE 802.11a,IEEE 802.11ac, IEEE802.11ax
Frequency	5 GHz(11ax) 2.4 GHz
Data Rate	5GHz: Up to 1201Mbps 2.4GHz: Up to 574Mbps
RSSI	2.4 GHz 11b-1M:-97dBm 11g-54M:-76dBm 11n-20M-MCS7:-74dBm 11n-40M-MCS7:-72dBm 5 GHz: 11a-6M:-95dBm 11n-20M-MCS7:-74dBm 11n-40M-MCS7:-72dBm 11ac-80M-MCS9:-63dBm
Transmit Power	2.4GHz (2412 MHz~2472 MHz):19.97dBm(Max.ERIP) 5GHz (5150 MHz~5250 MHz; 5250 MHz~5350 MHz; 5470 MHz~5725 MHz):22.99dBm(Max.ERIP)
Wireless Modes	Repeater Mode , Access Point Mode
Wireless Security	Default encryption mode: Mix WPA-PSK/WPA2-PSK/WPA3 WPA algorithm: TKIP

# Specification

---

<b>Others</b>	<b>Support unify 2.4 GHz &amp; 5 GHz function</b>
Certification	CE, FCC, RoHS
Plug Type	US, EU, UK, AU, BR
Package Contents	1 * AX1800 Wi-Fi 6 Range Extender 1 * Quick Installation Guide
System Tool	Online Upgrade, LED Indicator Control, DST, Factory Settings, Login Password and Reboot
Environment	Operating Temperature: 0°C~40°C Storage Temperature: -40°C~70°C Operating Humidity: (10~90)% RH, non-condensing Storage Humidity: (5~90)%RH, non-condensing
Related Products	TX3, RX3, RX9 Pro

**SHENZHEN TENDA TECHNOLOGY CO.,LTD.**

Tenda Technology Bldg.Int'lE-City,  
# 1001 Zhong Shan Yuan Rd.,Nanshan District,Shenzhen China.

E-mail:[support@tenda.com.cn](mailto:support@tenda.com.cn)  
Tel:+86-755-2765 7098  
Fax:+86-755-2765 7178  
PC:518055

