



SXT LTE6 kit-US

Affordable connectivity in remote areas.



**CARRIER
CERTIFIED
IN THE US!**



CATEGORY 6
LTE MODEM



CONNECT EVEN WHERE
YOUR PHONE FAILS!



CARRIER AGGREGATION
FOR A BETTER SIGNAL



TWO ETHERNET
PORTS



POE-IN & POE-OUT



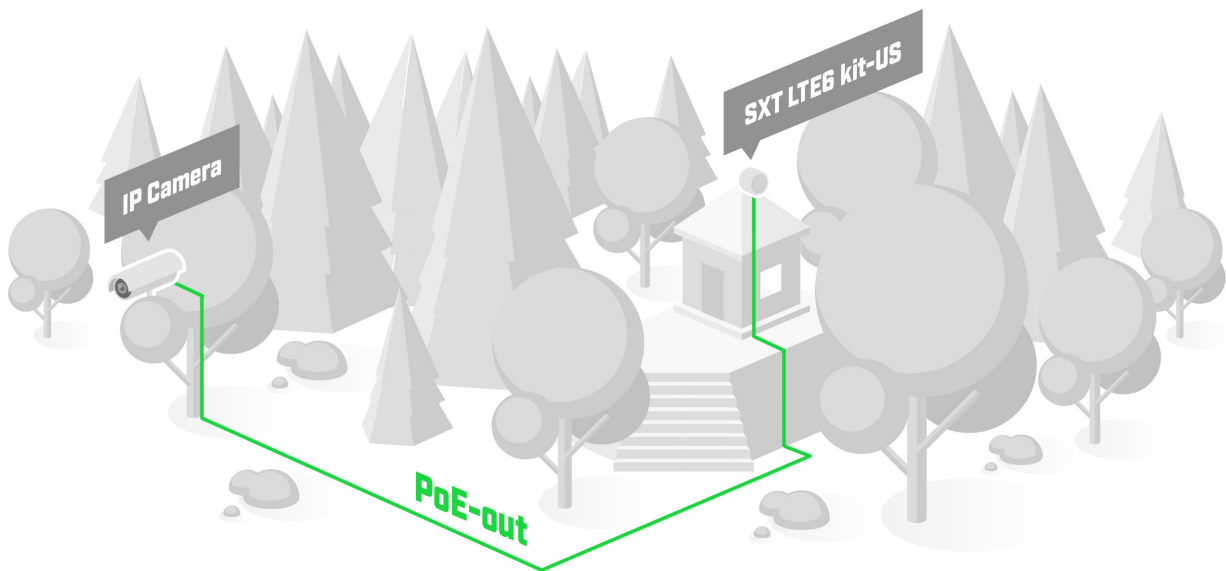
TWO MICRO-SIM SLOTS

This device is an absolute staple of affordable connectivity in remote areas. Even if your phone has no reception at all, our SXT LTE6 kit can still deliver due to its advanced LTE chip design and high-gain antenna.

There are two Ethernet ports. Ethernet port #1 has PoE-in. And Ethernet #2 has PoE-out. You can use it to power another device. Fewer cables to worry about in your sweet cabin in the woods!



The classic SXT design has been proved to attract less unwanted attention!



We've included two Micro-SIM slots – for backup. It never hurts to have extra options when it comes to mobile network coverage. Also, the Category 6 LTE modem enables carrier aggregation, allowing SXT to use multiple LTE bands simultaneously. That's a huge advantage when there are a lot of mobile users in the area. It offers better responsiveness in a crowded environment. And higher efficiency for weaker signal situations in the countryside. Win-win! We have seen Internet speed doubling in rural areas after switching to CAT6, so there is no need to wait for cable network expansions.

When it comes to powering, SXT LTE6 kit supports a wide voltage range of 18-57V with full 802.3af/at compliance.

• Specifications

Product code	SXTR&EP06-A
CPU	QCA9531 650 MHz
CPU architecture	MIPSBE
CPU core count	1
Size of RAM	64 MB
RAM type	DDR2
Storage	16 MB, Flash
Number of 100Mbit Ethernet ports	2
MiniPCIe slots	1
LTE category	6 (300Mbit/s Downlink, 50Mbit/s Uplink)
LTE modem	EG06-A
TAC	01611100
LTE FDD bands	2 (1900MHz) / 4 (1700MHz) / 5 (850MHz) / 7 (2600MHz) / 12 (700MHz) / 13 (700 MHz) / 25 (1900MHz) / 26 (850MHz) / 29 (700 MHz) / 30 (2300 MHz) / 66 (1700MHz)
MIMO DL	2x2
3G Category	R8 (42.2Mbps Downlink, 5.76Mbps Uplink)
3G Bands	2 (1900MHz) / 5 (850MHz)
Dimensions	140 x 140 x 56 mm
Operating system	RouterOS, License level 3
Operating temperature	-30°C to +60°C

• Powering

Number of DC inputs	1
PoE-in	Yes, on Ether1
PoE-Out	Yes on Ether2, max out per port output (input < 30 V): 600 mA, max out per port output (input > 30 V): 400 mA
Supported input voltage	12-57 V (Passive PoE 802.3af/at on Ether1)
Power adapter nominal voltage	24 V
Power adapter nominal current	1.2 A
Max power consumption without attachments	5 W
Max power consumption	22 W

• Included parts



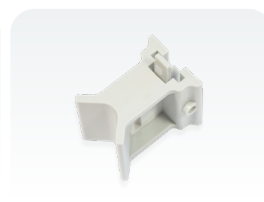
24 V 1.2 A
power adapter



Gigabit PoE injector



Metal ring



Pole mounting bracket