



***rocket M*** GPS

**Carrier Class  
AirMax BaseStation**

**Models:  
M2/M3/M365/M5/M900 GPS**

**QUICK START GUIDE**



## Introduction

Thank you for purchasing a Rocket M GPS series product. This Quick Start Guide is for use with the following models:

Model	Operating Frequency	Ethernet Ports
Rocket M900 GPS	902 - 928 MHz	1
Rocket M2 GPS	2402 - 2482 MHz	2
Rocket M3 GPS	3370 - 3730 MHz	1
Rocket M365 GPS	3650 - 3675 MHz	1
Rocket M5 GPS	5170 - 5875 MHz*	2

\* Only 5725-5850 MHz supported in the USA

## Package Contents



Rocket



Metal Strap



24V PoE Adapter



Power Cord



GPS Patch Antenna



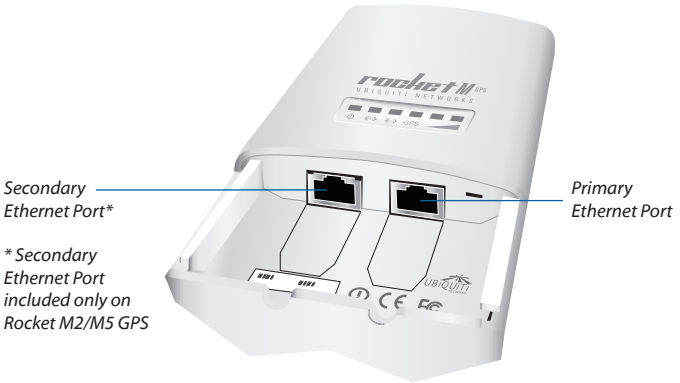
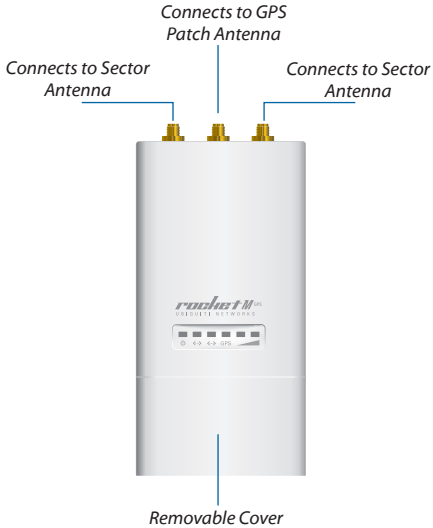
Quick Start Guide

## Installation Requirements

- Antenna needs to have clear line of sight to the sky.
- Shielded Category 5 (or above) cabling should be used for all wired Ethernet connections and should be grounded through the AC ground of the PoE.

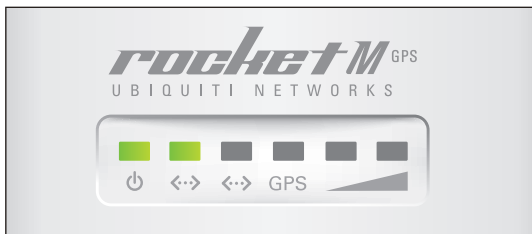
We recommend that you protect your networks from the most brutal environments and devastating ESD attacks with industrial-grade shielded Ethernet cable from Ubiquiti Networks. For more details, visit [www.ubnt.com/toughcable](http://www.ubnt.com/toughcable)

## Hardware Overview



**Note:** Secondary Ethernet Port is capable of 24V Power over Ethernet output which can provide power to a secondary device. It can be enabled using the airOS interface.

## LEDs



- - 
  - 
  - 
  - 
  -
- Power** The Power LED will light steady green when the Rocket is connected to a power source.
- Primary Ethernet** The first Ethernet LED will light steady green when an active Ethernet connection is made to the *Primary Ethernet Port* and flash when there is activity.
- Secondary Ethernet** The second Ethernet LED will light steady green when an active Ethernet connection is made to the *Secondary Ethernet Port*. The Secondary Ethernet Port is included only on the Rocket M2/M5 GPS.
- GPS 
**GPS** The GPS LED lights up green when the GPS signal strength can sustain AirSync operation. This requires a minimum of 3 satellite connections.
- Signal** The first Signal LED is lit when the wireless signal strength is above -94 dBm, the second LED when the wireless signal strength is above -65 dBm.

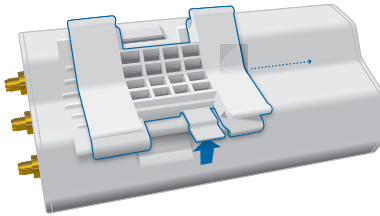


**Note:** By default, the Signal LEDs represent the wireless signal strength with default threshold values. In the airOS interface, you can modify the threshold values for each LED or configure the LEDs to display the GPS connection quality instead. The settings can be configured on the *Advanced* tab under *Signal LED Thresholds*.

## Adapter

The Rocket M GPS includes a pre-installed adapter for use on dish antenna installations. The adapter can remain on when connecting the Rocket M GPS to a sector antenna except when connecting to the 900 MHz sector antenna. You must remove the adapter for 900 MHz sector antenna installations. Removal for other sector antenna installations is optional.

To remove the pre-installed adapter from the Rocket M GPS, lift up the latch and slide the adapter off.

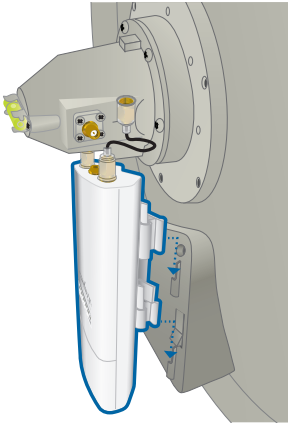


## Connecting the Rocket M GPS

1. Connect the RF cables to the connectors labeled *Chain 0* and *Chain 1* on the Rocket M GPS.



- Slide the Rocket M GPS on to the antenna mount with the pre-installed adapter connected.

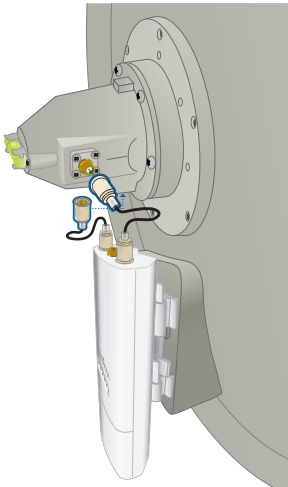


*Mounting on a Dish Antenna*



*Mounting on a Sector Antenna*

- Attach the RF cables from the Rocket M GPS to the connectors on the antenna.

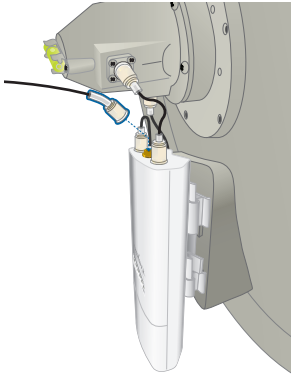


*Connecting to a Dish Antenna*

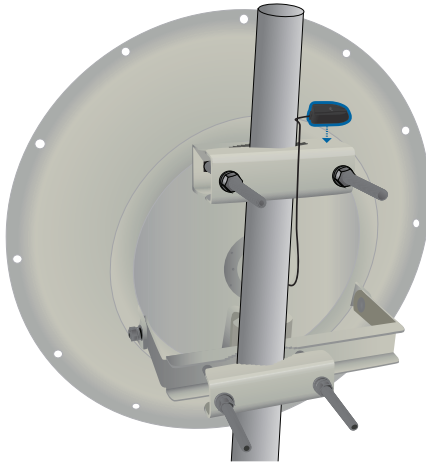


*Connecting to a Sector Antenna*

4. Connect the GPS Patch Antenna to the center connector labeled *GPS* on the Rocket.

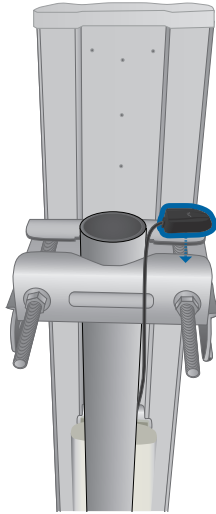


5. Place the GPS Patch Antenna on the mounting hardware.



*Dish Antenna Placement*





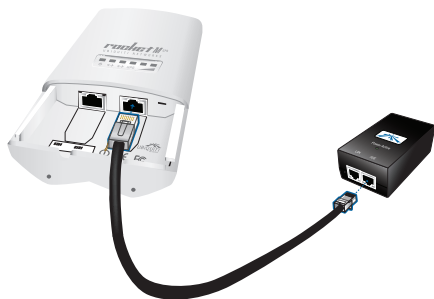
*Sector Antenna Placement*

## Connecting Power over Ethernet

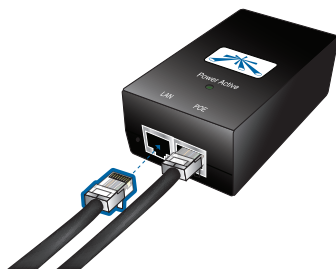
1. Remove the port cover by lifting the release latch on the bottom of the Rocket M GPS and sliding the cover off.



2. Connect an Ethernet cable to the Primary Ethernet Port and to the Ethernet port labeled **POE** on the *PoE Adapter*.



3. Connect an Ethernet cable from your LAN to the Ethernet port labeled **LAN** on the *PoE Adapter*.



4. Connect the power cord to the power port on the *PoE Adapter*. Connect the other end of the power cord to a power outlet.



5. If you need to connect the secondary Ethernet port (M2/M5 GPS only) then do so at this time. Replace the port cover.



## airOS Confirmation

Verify connectivity in the airOS interface.

1. Make sure that your host machine is connected via Ethernet to the Rocket.
2. Configure the Ethernet adapter on your host system with a static IP address on the 192.168.1.x subnet.
3. Launch your Web browser and type **http://192.168.1.20** in the address field and press enter (PC) or return (Mac).



- The login screen will appear. Enter **ubnt** in the *Username* and *Password* fields. Select your *Country* and *Language*. You must agree to the *Terms of Use* to use the product. Click **Login**.



**Note:** U.S. product versions are locked to the U.S. Country Code to ensure compliance with FCC regulations.

- On the *Main* tab you can verify the *GPS Signal Quality*. Click on the *GPS Details* tab under *Monitor* to view the Satellite and Signal details.

**Status**

Device Name: UBNT  
 Network Mode: Bridge  
 Wireless Mode: Station  
 SSID: ubnt  
 Security: none  
 Version: v5.5-beta2.9295  
 Uptime: 00:38:19  
 Date: 2011-06-03 20:00:15  
 Channel/Frequency: 165 / 5825 MHz  
 Channel Width: Auto 20 / 40 MHz  
 ACK/Distance: 27 / 0.1 miles (0.2 km)  
 TXRX Chains: 2X2  
 WLAN MAC: 00:27:22:04:35:C3  
 LAN MAC: 00:27:22:05:35:C3  
 LAN/LAN1: 100Mbps-Full / Unplugged

AP MAC: Not Associated  
 Signal Strength: -  
 Chain 0 / Chain 1: 0 / 0 dBm  
 Noise Floor: -  
 Transmit CCK: -  
 TXRX Rate: - / -  
 AirMax: -

GPS Signal Quality:  90 %  
 Latitude / Longitude: 33.78743 / -117.86277  
 Altitude: 20 m

**Monitor**

Throughput | AP Information | ARP Table | Bridge Table | Routes | **GPS Details** | Log

Satellite	Signal	Satellite	Signal
17	<span style="display: inline-block; width: 100px; height: 10px; background: linear-gradient(to right, red, orange, yellow, green, blue);"></span>	28	<span style="display: inline-block; width: 100px; height: 10px; background: linear-gradient(to right, red, orange, yellow, green, blue);"></span>
08	<span style="display: inline-block; width: 100px; height: 10px; background: linear-gradient(to right, red, orange, yellow, green, blue);"></span>	26	<span style="display: inline-block; width: 100px; height: 10px; background: linear-gradient(to right, red, orange, yellow, green, blue);"></span>
24	<span style="display: inline-block; width: 100px; height: 10px; background: linear-gradient(to right, red, orange, yellow, green, blue);"></span>	11	<span style="display: inline-block; width: 100px; height: 10px; background: linear-gradient(to right, red, orange, yellow, green, blue);"></span>
07	<span style="display: inline-block; width: 100px; height: 10px; background: linear-gradient(to right, red, orange, yellow, green, blue);"></span>	51	<span style="display: inline-block; width: 100px; height: 10px; background: linear-gradient(to right, red, orange, yellow, green, blue);"></span>
15	<span style="display: inline-block; width: 100px; height: 10px; background: linear-gradient(to right, red, orange, yellow, green, blue);"></span>	27	<span style="display: inline-block; width: 100px; height: 10px; background: linear-gradient(to right, red, orange, yellow, green, blue);"></span>

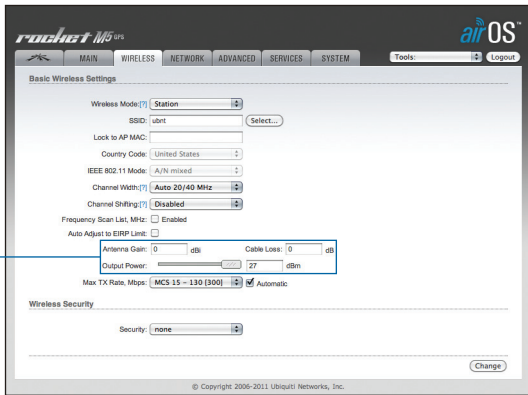
© Copyright 2006-2011 Ubiquiti Networks, Inc.

GPS Details tab

The airOS Interface will appear allowing you to customize your settings as needed.

## Installer Compliance Responsibility

Devices must be professionally installed and it is the professional installer's responsibility to make sure the device is operated within local country regulatory requirements.



Since Ubiquiti Networks equipment can be paired with a variety of antennas and cables, the *Antenna Gain*, *Cable Loss*, and *Output Power* fields are provided to the professional installer to assist in meeting regulatory requirements.

## AirSync Capabilities


Many situations require the use of multiple AirMax M series devices on the same tower. For example, the addition of an AirMax basestation on an existing tower to service a new area or increase the capacity of an existing network by using multiple basestations with narrow coverage areas instead of one basestation with a wide coverage area.

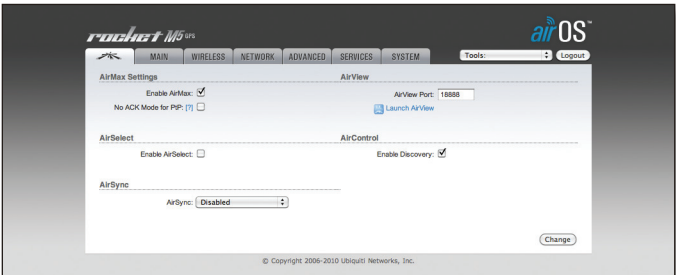
If the devices are using the same RF-band (e.g. 5 GHz or 2.4 GHz), even if they are configured on separate frequencies, the devices would interfere with each other. Additionally some RF bands like 900 MHz and 3.65 GHz have only 1 20 MHz channel requiring all the basestations to use the same frequency. This interference will cause Receive (Rx) errors on the basestation when it receives packets from associated stations that are typically miles away.

With AirSync, the basestations make use of a common clock source using the built-in GPS receiver. One device is configured as the synchronization master and the others are configured in *Slave Mode* and provided with the MAC Address of the *Master*.

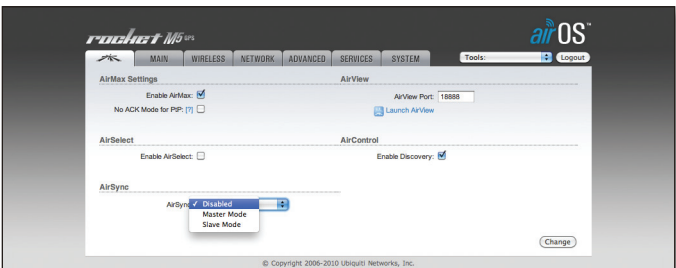
Once this is done, the *Master* and *Slave* devices synchronize their transmit and receive cycles so that they transmit at the same time and receive at the same time. This resolves the interference issues.

## Enabling Master/Slave Mode

1. Launch your web browser and login to the airOS interface (see page 10 for login details).
2. Go to the Ubiquiti  tab.



3. Select the appropriate mode: **Master Mode** should be selected on your master device and **Slave Mode** should be selected on all of your slave devices with the MAC address of the *Master* in the *Sync Master* field.



4. Click **Change** to save your selection.

## Specifications

Enclosure Size	16 x 8 x 3 cm
Weight	0.5 kg
Max Power Consumption	8 Watts
Power Supply	24V, 1A PoE Supply Included
Power Method	Passive PoE (Pairs 4, 5+; 7,8 return)
Operating Temperature	-30 to 75° C
Operating Frequency	
M900	902 - 928 MHz
M2	2402 - 2462 MHz
M3	3370 - 3730 MHz
M365	3650 - 3675 MHz
M5	5170 - 5875 MHz*
Networking Interface	
M900/M3/M365	(1) 10/100 Ethernet Port
M2/M5	(2) 10/100 Ethernet Ports

\* Only 5725 - 5850 MHz supported in the USA

## Safety Notices

1. Read, follow, and keep these instructions.
2. Heed all warnings.
3. Only use attachments/accessories specified by the manufacturer.



**WARNING:** Do not use this product in location that can be submerged by water.



**WARNING:** Avoid using this product during an electrical storm. There may be a remote risk of electric shock from lightning.

## Electrical Safety Information

1. Compliance is required with respect to voltage, frequency, and current requirements indicated on the manufacturer's label. Connection to a different power source than those specified may result in improper operation, damage to the equipment or pose a fire hazard if the limitations are not followed.
2. There are no operator serviceable parts inside this equipment. Service should be provided only by a qualified service technician.
3. This equipment is provided with a detachable power cord which has an integral safety ground wire intended for connection to a grounded safety outlet.
  - a. Do not substitute the power cord with one that is not the provided approved type. Never use an adapter plug to connect to a 2-wire outlet as this will defeat the continuity of the grounding wire.
  - b. The equipment requires the use of the ground wire as a part of the safety certification, modification or misuse can provide a shock hazard that can result in serious injury or death.
  - c. Contact a qualified electrician or the manufacturer if there are questions about the installation prior to connecting the equipment.



## General Warranty

UBIQUITI NETWORKS, Inc (“UBIQUITI NETWORKS”) represents and warrants that the Products furnished hereunder shall be free from defects in material and workmanship for a period of one (1) year from the date of shipment by UBIQUITI NETWORKS under normal use and operation. UBIQUITI NETWORKS sole and exclusive obligation under the foregoing warranty shall be to repair or replace, at its option, any defective Product that fails during the warranty period. The expense of removal and reinstallation of any item is not included in this warranty.

The foregoing warranty is exclusive and in lieu of all other warranties, express or implied, including the implied warranties of merchantability and fitness for a particular purpose and any warranties arising from a course of dealing, usage or trade practice with respect to the products. Repair or replacement in the manner provided herein shall be the sole and exclusive remedy of Buyer for breach of warranty and shall constitute fulfillment of all liabilities of UBIQUITI NETWORKS with respect to the quality and performance of the Products. UBIQUITI NETWORKS reserves the right to inspect all defective Products (which must be returned by Buyer to UBIQUITI NETWORKS factory freight prepaid).

No Products will be accepted for replacement or repair without obtaining a Return Materials Authorization (RMA) number from UBIQUITI NETWORKS. Products returned without an RMA number will not be processed and will be returned to Buyer freight collect. UBIQUITI NETWORKS shall have no obligation to make repairs or replacement necessitated by catastrophe, fault, negligence, misuse, abuse, or accident by Buyer, Buyer’s customers or any other parties. The warranty period of any repaired or replaced. Product shall not extend beyond its original term.

## Warranty Conditions

The foregoing warranty shall apply only if:

- (I) The Product has not been subjected to misuse, neglect or unusual physical, electrical or electromagnetic stress, or some other type of accident.
- (II) No modification, alteration or addition has been made to the Product by persons other than UBIQUITI NETWORKS or UBIQUITI NETWORKS’s authorized representatives or otherwise approved by UBIQUITI NETWORKS.
- (III) The Product has been properly installed and used at all times in accordance, and in all material respects, with the applicable Product documentation.
- (IV) All Ethernet cabling runs use CAT5 (or above) shielded cabling.

Disclaimer: UBIQUITI NETWORKS does not warrant that the operation of the products is error-free or that operation will be uninterrupted. In no event shall UBIQUITI NETWORKS be responsible for damages or claims of any nature or description relating to system performance, including coverage, buyer’s selection of products for buyer’s application and/or failure of products to meet government or regulatory requirements.

## Returns

In the unlikely event a defect occurs, please work through the dealer or distributor from which this product was purchased.

## Compliance

### FCC

Changes or modifications not expressly approved by the party responsible for compliance could void the user's authority to operate the equipment.

This device complies with Part 15 of the FCC Rules. Operation is subject to the following two conditions:

1. This device may not cause interference, and
2. This device must accept any interference, including interference that may cause undesired operation of the device.

NOTE: This equipment has been tested and found to comply with the limits for a Class A digital device, pursuant to part 15 of the FCC Rules. These limits are designed to provide reasonable protection against harmful interference when the equipment is operated in a commercial environment. This equipment generates, uses, and can radiate radio frequency energy and, if not installed and used in accordance with the instruction manual, may cause harmful interference to radio communications. Operations of this equipment in a residential area is likely to cause harmful interference in which case the user will be required to correct the interference at his own expense.

For MPE and antenna usage details, please visit our website at [www.ubnt.com/compliance](http://www.ubnt.com/compliance)

### RF Exposure Warning

The transceiver described here emits radio frequency energy. Although the power level is low, the concentrated energy from a directional antenna may pose a health hazard. Do not allow people to come closer than 37.2 cm to the antenna when the transmitter is operating.

Additional information on RF exposure is available on the Internet at [www.fcc.gov/oet/info/documents/bulletins](http://www.fcc.gov/oet/info/documents/bulletins)

L'émetteur-récepteur décrit ici émet de l'énergie de fréquence radio. Bien que le niveau de puissance est faible, l'énergie concentrée à partir d'une antenne directionnelle peut présenter un danger pour la santé. Ne pas permettre aux gens de se rapprocher de 37.2 cm à l'antenne lorsque l'émetteur est en marche.

Des renseignements supplémentaires sur l'exposition aux RF est disponible sur Internet à [www.fcc.gov/oet/info/documents/bulletins](http://www.fcc.gov/oet/info/documents/bulletins)

## CE Marking

CE marking on this product represents the product is in compliance with all directives that are applicable to it.

### Alert sign! Follows CE marking

Alert sign must be indicated if a restriction on use applied to the product and it must follow the CE marking.



### NB-Identification number (if there is any)

Notified body number is indicated if it is involved in the conformity assessment procedure.



Please check the CE mark on the product label to find out which notified body was involved during assessment.

## RoHS/WEEE Compliance Statement



### English

European Directive 2002/96/EC requires that the equipment bearing this symbol on the product and/or its packaging must not be disposed of with unsorted municipal waste. The symbol indicates that this product should be disposed of separately from regular household waste streams. It is your responsibility to dispose of this and other electric and electronic equipment via designated collection facilities appointed by the government or local authorities. Correct disposal and recycling will help prevent potential negative consequences to the environment and human health. For more detailed information about the disposal of your old equipment, please contact your local authorities, waste disposal service, or the shop where you purchased the product.

## Deutsch

Die Europäische Richtlinie 2002/96/EC verlangt, dass technische Ausrüstung, die direkt am Gerät und/oder an der Verpackung mit diesem Symbol versehen ist, nicht zusammen mit unsortiertem Gemeindeabfall entsorgt werden darf. Das Symbol weist darauf hin, dass das Produkt von regulärem Haushaltsmüll getrennt entsorgt werden sollte. Es liegt in Ihrer Verantwortung, dieses Gerät und andere elektrische und elektronische Geräte über die dafür zuständigen und von der Regierung oder örtlichen Behörden dazu bestimmten Sammelstellen zu entsorgen. Ordnungsgemäßes Entsorgen und Recyceln trägt dazu bei, potentielle negative Folgen für Umwelt und die menschliche Gesundheit zu vermeiden. Wenn Sie weitere Informationen zur Entsorgung Ihrer Altgeräte benötigen, wenden Sie sich bitte an die örtlichen Behörden oder städtischen Entsorgungsdienste oder an den Händler, bei dem Sie das Produkt erworben haben.

## Español

La Directiva 2002/96/CE de la UE exige que los equipos que lleven este símbolo en el propio aparato y/o en su embalaje no deben eliminarse junto con otros residuos urbanos no seleccionados. El símbolo indica que el producto en cuestión debe separarse de los residuos domésticos convencionales con vistas a su eliminación. Es responsabilidad suya desechar este y cualesquiera otros aparatos eléctricos y electrónicos a través de los puntos de recogida que ponen a su disposición el gobierno y las autoridades locales. Al desechar y reciclar correctamente estos aparatos estará contribuyendo a evitar posibles consecuencias negativas para el medio ambiente y la salud de las personas. Si desea obtener información más detallada sobre la eliminación segura de su aparato usado, consulte a las autoridades locales, al servicio de recogida y eliminación de residuos de su zona o pregunte en la tienda donde adquirió el producto.

## Français

La directive européenne 2002/96/CE exige que l'équipement sur lequel est apposé ce symbole sur le produit et/ou son emballage ne soit pas jeté avec les autres ordures ménagères. Ce symbole indique que le produit doit être éliminé dans un circuit distinct de celui pour les déchets des ménages. Il est de votre responsabilité de jeter ce matériel ainsi que tout autre matériel électrique ou électronique par les moyens de collecte indiqués par le gouvernement et les pouvoirs publics des collectivités territoriales. L'élimination et le recyclage en bonne et due forme ont pour but de lutter contre l'impact néfaste potentiel de ce type de produits sur l'environnement et la santé publique. Pour plus d'informations sur le mode d'élimination de votre ancien équipement, veuillez prendre contact avec les pouvoirs publics locaux, le service de traitement des déchets, ou l'endroit où vous avez acheté le produit.

## Italiano

La direttiva europea 2002/96/EC richiede che le apparecchiature contrassegnate con questo simbolo sul prodotto e/o sull'imballaggio non siano smaltite insieme ai rifiuti urbani non differenziati. Il simbolo indica che questo prodotto non deve essere smaltito insieme ai normali rifiuti domestici. È responsabilità del proprietario smaltire sia questi prodotti sia le altre apparecchiature elettriche ed elettroniche mediante le specifiche strutture di raccolta indicate dal governo o dagli enti pubblici locali. Il corretto smaltimento ed il riciclaggio aiuteranno a prevenire conseguenze potenzialmente negative per l'ambiente e per la salute dell'essere umano. Per ricevere informazioni più dettagliate circa lo smaltimento delle vecchie apparecchiature in Vostro possesso, Vi invitiamo a contattare gli enti pubblici di competenza, il servizio di smaltimento rifiuti o il negozio nel quale avete acquistato il prodotto.

## Declaration of Conformity

Česky [Czech]	UBIQUITI NETWORKS tímto prohlašuje, a tento UBIQUITI NETWORKS device, je ve shodě se základními požadavky a dále s ostatními ustanoveními směrnice 1999/5/ES.
Dansk [Danish]	Undertegnede UBIQUITI NETWORKS erklærer herved, at følgende udstyr UBIQUITI NETWORKS device, overholder de væsentlige krav og øvrige relevante krav i direktiv 1999/5/EF.
Nederlands [Dutch]	Hierbij verklaart UBIQUITI NETWORKS dat het toestel UBIQUITI NETWORKS device, in overeenstemming is met de essentiële eisen en de andere relevante bepalingen van richtlijn 1999/5/EG. Bij deze verklaart UBIQUITI NETWORKS dat deze UBIQUITI NETWORKS device, voldoet aan de essentiële eisen en aan de overige relevante bepalingen van Richtlijn 1999/5/EC.
English	Hereby, UBIQUITI NETWORKS, declares that this UBIQUITI NETWORKS device, is in compliance with the essential requirements and other relevant provisions of Directive 1999/5/EC.
Eesti [Estonian]	Käesolevaga kinnitab UBIQUITI NETWORKS seadme UBIQUITI NETWORKS device, vastavust direktiivi 1999/5/EÜ põhinõuetele ja nimetatud direktiivist tulenevatele teistele asjakohastele sätetele.
Suomi [Finnish]	UBIQUITI NETWORKS vakuuttaa täten että UBIQUITI NETWORKS device, tyypinen laite on direktiivin 1999/5/EY oleellisten vaatimusten ja sitä koskevien direktiivin muiden ehtojen mukainen.
Français [French]	Par la présente UBIQUITI NETWORKS déclare que l'appareil UBIQUITI NETWORKS device est conforme aux exigences essentielles et aux autres dispositions pertinentes de la directive 1999/5/CE. Par la présente, UBIQUITI NETWORKS déclare que ce UBIQUITI NETWORKS device, est conforme aux exigences essentielles et aux autres dispositions de la directive 1999/5/CE qui lui sont applicables.
Deutsch [German]	Hiermit erklärt UBIQUITI NETWORKS, dass sich diese UBIQUITI NETWORKS device, in Übereinstimmung mit den grundlegenden Anforderungen und den anderen relevanten Vorschriften der Richtlinie 1999/5/EG befindet". (BMW i) Hiermit erklärt UBIQUITI NETWORKS die Übereinstimmung des Gerätes UBIQUITI NETWORKS device, mit den grundlegenden Anforderungen und den anderen relevanten Festlegungen der Richtlinie 1999/5/EG. (Wien)
Ελληνική [Greek]	ΜΕ ΤΗΝ ΠΑΡΟΥΣΑ UBIQUITI NETWORKS ΔΗΛΩΝΕΙ ΟΤΙ UBIQUITI NETWORKS device, ΣΥΜΜΟΡΦΩΝΕΤΑΙ ΠΡΟΣ ΤΙΣ ΟΥΣΙΩΔΕΙΣ ΑΠΑΙΤΗΣΕΙΣ ΚΑΙ ΤΙΣ ΛΟΙΠΕΣ ΣΧΕΤΙΚΕΣ ΔΙΑΤΑΞΕΙΣ ΤΗΣ ΟΔΗΓΙΑΣ 1995/5/EK.

<b>Magyar</b> [Hungarian]	Alulírott, UBIQUITI NETWORKS nyilatkozom, hogy a UBIQUITI NETWORKS device, megfelel a vonatkozó alapvető követelményeknek és az 1999/5/EC irányelv egyéb előírásainak.
<b>Íslenska</b> [Icelandic]	Hér me l sír UBIQUITI NETWORKS yfir ví a UBIQUITI NETWORKS device, er í samræmi við grunnkröfur og a rar kröfur, sem ger ar eru í tilskipun 1999/5/EC.
<b>Italiano</b> [Italian]	Con la presente UBIQUITI NETWORKS dichiara che questo UBIQUITI NETWORKS device, è conforme ai requisiti essenziali ed alle altre disposizioni pertinenti stabilite dalla direttiva 1999/5/CE.
<b>Latviski</b> [Latvian]	Ar o UBIQUITI NETWORKS deklar , ka UBIQUITI NETWORKS device, atbilst Direkt vas 1999/5/EK b tiskaj m pras b m un citiem ar to saist tajiem noteikumiem.
<b>Lietuviškai</b> [Lithuanian]	UBIQUITI NETWORKS deklaruoja, kad šis UBIQUITI NETWORKS įrenginys atitinka esminius reikalavimus ir kitas 1999/5/EB Direktyvos nuostatas.
<b>Malti</b> [Maltese]	Hawnhekk, UBIQUITI NETWORKS, jiddikjara li dan UBIQUITI NETWORKS device, jikkonforma mal- ti ijjiet essenzjali u ma provvedimenti o rajn relevanti li hemm fid-Direttiva 1999/5/EC.
<b>Norsk</b> [Norwegian]	UBIQUITI NETWORKS erklærer herved at utstyret UBIQUITI NETWORKS device, er i samsvar med de grunnleggende krav og øvrige relevante krav i direktiv 1999/5/EF.
<b>Slovensky</b> [Slovak]	UBIQUITI NETWORKS t mto vyhlasuje, e UBIQUITI NETWORKS device, sp a základné požiadavky a v etky príslu né ustanovenia Smernice 1999/5/ES.
<b>Svenska</b> [Swedish]	Härmed intygar UBIQUITI NETWORKS att denna UBIQUITI NETWORKS device, står i överensstämmelse med de väsentliga egenskapskrav och övriga relevanta bestämmelser som framgår av direktiv 1999/5/EG.
<b>Español</b> [Spanish]	Por medio de la presente UBIQUITI NETWORKS declara que el UBIQUITI NETWORKS device, cumple con los requisitos esenciales y cualesquiera otras disposiciones aplicables o exigibles de la Directiva 1999/5/CE.
<b>Polski</b> [Polish]	Niniejszym, firma UBIQUITI NETWORKS o wiadcza, e produkt serii UBIQUITI NETWORKS device, spełnia zasadnicze wymagania i inne istotne postanowienia Dyrektywy 1999/5/EC.
<b>Português</b> [Portuguese]	UBIQUITI NETWORKS declara que este UBIQUITI NETWORKS device, está conforme com os requisitos essenciais e outras disposições da Directiva 1999/5/CE.



## Ubiquiti Networks Support

Email: **support@ubnt.com**

Phone (9 a.m. - 5 p.m. PST): **408-942-1153**

## Online Resources

Wiki Page: **www.ubnt.com/wiki**

Support Forum: **www.ubnt.com/forum**

Knowledge Base: **www.ubnt.com/kb**

Downloads: **www.ubnt.com/support/downloads**

