

TEST REPORT

Client Name	SHENZHEN IP-COM NETWORKS CO., LTD.
Name of product	8-Port 10/100Mbps +2 Gigabit Desktop Switch With 8-Port PoE
Manufacturer	----
Model	F1110P-8-102W
Test sort	Commission Test



CCIC Southern Electronic Product Testing (Shenzhen) Co., Ltd.

Address: Electronic Testing Building, No. 43 Shahe Road, Xili Jiedao, Nanshan District, Shenzhen, Guangdong, China

P.C.: 518055

TEL: 86-755-26627338

Internet: [http:// www.ccic-set.com](http://www.ccic-set.com)

FAX: 86-755-26627238

E-Mail: manager@ccic-set.com



Customer information	Client	SHENZHEN IP-COM NETWORKS CO., LTD.
	Address	Room 101, Unit A, First Floor, Tower E3, No. 1001, Zhongshanyuan Road, Nanshan District, Shenzhen, China. 518052
Sample information	Name of sample	8-Port 10/100Mbps +2 Gigabit Desktop Switch With 8-Port PoE
	Model	F1110P-8-102W
	Trade mark	----
	Lot number	----
	Manufacturer	----
	Address	----
Test information	Sample received	Jan. 22, 2017
	Testing date	Jan. 22, 2017 ~ Feb. 13, 2017
	Test sort	Commission Test
	Requested/item	RoHS directive 2011/65/EU
	Standard/Foundation	(1)With reference to IEC 62321-3-1:2013, scanning by XRF Spectroscopy (2)Chemical test method: With reference to IEC 62321-5:2013, determination of Lead, Cadmium, by ICP With reference to IEC 62321-4:2013, determination of Mercury by ICP With reference to IEC 62321:2008 & IEC 62321-7-1:2015, determination of Hexavalent Chromium by Colorimetric method With reference to IEC 62321-6:2015, determination of PBBs, PBDEs by GC-MS.
	Conclusion	The tested sample complied with RoHS directive (2011/65/EU).
Remark	All test result quote from report No.SET2017-01222	

Tested By:

Checked By:

Approved By:

Date:

Feb. 27, 2017

Date:

Feb. 27, 2017

Date:

Feb. 27, 2017



Test result:

No.	COMPONENTS	Item	Results of EDXRF (P/F/D)	Results of Testing (mg/kg)	Chemical testing limit (mg/kg)	Conclusion (P/F)
1	Gray coating	Cd	P	/	<100	P
		Cr(VI)	P	/	<1000	P
		Hg	P	/	<1000	P
		Pb	P	/	<1000	P
		PBBs	P	/	<1000	P
		PBDEs	P	/	<1000	P
2	Silvery metal shell	Cd	P	/	<100	P
		Cr(VI)	P	/	<1000	P
		Hg	P	/	<1000	P
		Pb	P	/	<1000	P
		PBBs	/	/	<1000	/
		PBDEs	/	/	<1000	/
3	White big label	Cd	P	/	<100	P
		Cr(VI)	P	/	<1000	P
		Hg	P	/	<1000	P
		Pb	P	/	<1000	P
		PBBs	P	/	<1000	P
		PBDEs	P	/	<1000	P
4	White small label	Cd	P	/	<100	P
		Cr(VI)	P	/	<1000	P
		Hg	P	/	<1000	P
		Pb	P	/	<1000	P
		PBBs	P	/	<1000	P
		PBDEs	P	/	<1000	P
5	Pink rubber mat	Cd	P	/	<100	P
		Cr(VI)	P	/	<1000	P
		Hg	P	/	<1000	P
		Pb	P	/	<1000	P
		PBBs	P	/	<1000	P
		PBDEs	P	/	<1000	P
6	Silvery metal screw	Cd	P	/	<100	P
		Cr(VI)	P	/	<1000	P
		Hg	P	/	<1000	P
		Pb	P	/	<1000	P
		PBBs	/	/	<1000	/
		PBDEs	/	/	<1000	/



No.	COMPONENTS	Item	Results of EDXRF (P/F/D)	Results of Testing (mg/kg)	Chemical testing limit (mg/kg)	Conclusion (P/F)
7	Silvery metal gasket	Cd	P	/	<100	P
		Cr(VI)	P	/	<1000	P
		Hg	P	/	<1000	P
		Pb	P	/	<1000	P
		PBBs	/	/	<1000	/
		PBDEs	/	/	<1000	/
8	Black metal screw	Cd	P	/	<100	P
		Cr(VI)	P	/	<1000	P
		Hg	P	/	<1000	P
		Pb	P	/	<1000	P
		PBBs	/	/	<1000	/
		PBDEs	/	/	<1000	/
9	PCB substrate	Cd	P	/	<100	P
		Cr(VI)	P	/	<1000	P
		Hg	P	/	<1000	P
		Pb	P	/	<1000	P
		PBBs	D	N.D.	<1000	P
		PBDEs	D	N.D.	<1000	P
10	Blue coating	Cd	P	/	<100	P
		Cr(VI)	P	/	<1000	P
		Hg	P	/	<1000	P
		Pb	P	/	<1000	P
		PBBs	P	/	<1000	P
		PBDEs	P	/	<1000	P
11	Copper foil	Cd	P	/	<100	P
		Cr(VI)	P	/	<1000	P
		Hg	P	/	<1000	P
		Pb	P	/	<1000	P
		PBBs	/	/	<1000	/
		PBDEs	/	/	<1000	/
12	Soldering tin	Cd	P	/	<100	P
		Cr(VI)	P	/	<1000	P
		Hg	P	/	<1000	P
		Pb	P	/	<1000	P
		PBBs	/	/	<1000	/
		PBDEs	/	/	<1000	/



No.	COMPONENTS	Item	Results of EDXRF (P/F/D)	Results of Testing (mg/kg)	Chemical testing limit (mg/kg)	Conclusion (P/F)
13	U16 black IC body	Cd	P	/	<100	P
		Cr(VI)	P	/	<1000	P
		Hg	P	/	<1000	P
		Pb	P	/	<1000	P
		PBBs	P	/	<1000	P
		PBDEs	P	/	<1000	P
14	Black resistor body	Cd	P	/	<100	P
		Cr(VI)	P	/	<1000	P
		Hg	P	/	<1000	P
		Pb	P	/	<1000	P
		PBBs	P	/	<1000	P
		PBDEs	P	/	<1000	P
15	Yellow capacitor body	Cd	P	/	<100	P
		Cr(VI)	P	/	<1000	P
		Hg	P	/	<1000	P
		Pb	P	/	<1000	P
		PBBs	P	/	<1000	P
		PBDEs	P	/	<1000	P
16	Black diode body	Cd	P	/	<100	P
		Cr(VI)	P	/	<1000	P
		Hg	P	/	<1000	P
		Pb	P	/	<1000	P
		PBBs	P	/	<1000	P
		PBDEs	P	/	<1000	P
17	White capacitor body	Cd	P	/	<100	P
		Cr(VI)	P	/	<1000	P
		Hg	P	/	<1000	P
		Pb	P	/	<1000	P
		PBBs	P	/	<1000	P
		PBDEs	P	/	<1000	P
18	SF8 black diode body	Cd	P	/	<100	P
		Cr(VI)	P	/	<1000	P
		Hg	P	/	<1000	P
		Pb	P	/	<1000	P
		PBBs	P	/	<1000	P
		PBDEs	P	/	<1000	P



No.	COMPONENTS	Item	Results of EDXRF (P/F/D)	Results of Testing (mg/kg)	Chemical testing limit (mg/kg)	Conclusion (P/F)
19	U10 black IC body	Cd	P	/	<100	P
		Cr(VI)	P	/	<1000	P
		Hg	P	/	<1000	P
		Pb	P	/	<1000	P
		PBBs	P	/	<1000	P
		PBDEs	P	/	<1000	P
20	J1 black plastic socket	Cd	P	/	<100	P
		Cr(VI)	P	/	<1000	P
		Hg	P	/	<1000	P
		Pb	P	/	<1000	P
		PBBs	D	N.D.	<1000	P
		PBDEs	D	N.D.	<1000	P
21	Silvery metal inner core	Cd	P	/	<100	P
		Cr(VI)	P	/	<1000	P
		Hg	P	/	<1000	P
		Pb	P	/	<1000	P
		PBBs	/	/	<1000	/
		PBDEs	/	/	<1000	/
22	Silvery metal pin	Cd	P	/	<100	P
		Cr(VI)	P	/	<1000	P
		Hg	P	/	<1000	P
		Pb	P	/	<1000	P
		PBBs	/	/	<1000	/
		PBDEs	/	/	<1000	/
23	C235 green plastic outer jacket	Cd	P	/	<100	P
		Cr(VI)	P	/	<1000	P
		Hg	P	/	<1000	P
		Pb	P	/	<1000	P
		PBBs	P	/	<1000	P
		PBDEs	P	/	<1000	P
24	Silvery metal shell	Cd	P	/	<100	P
		Cr(VI)	P	/	<1000	P
		Hg	P	/	<1000	P
		Pb	P	/	<1000	P
		PBBs	/	/	<1000	/
		PBDEs	/	/	<1000	/



No.	COMPONENTS	Item	Results of EDXRF (P/F/D)	Results of Testing (mg/kg)	Chemical testing limit (mg/kg)	Conclusion (P/F)
25	Black rubber plug	Cd	P	/	<100	P
		Cr(VI)	P	/	<1000	P
		Hg	P	/	<1000	P
		Pb	P	/	<1000	P
		PBBs	P	/	<1000	P
		PBDEs	P	/	<1000	P
26	Yellow paper	Cd	P	/	<100	P
		Cr(VI)	P	/	<1000	P
		Hg	P	/	<1000	P
		Pb	P	/	<1000	P
		PBBs	P	/	<1000	P
		PBDEs	P	/	<1000	P
27	Gray metal foil	Cd	P	/	<100	P
		Cr(VI)	P	/	<1000	P
		Hg	P	/	<1000	P
		Pb	P	/	<1000	P
		PBBs	/	/	<1000	/
		PBDEs	/	/	<1000	/
28	Silvery metal pin	Cd	P	/	<100	P
		Cr(VI)	P	/	<1000	P
		Hg	P	/	<1000	P
		Pb	P	/	<1000	P
		PBBs	/	/	<1000	/
		PBDEs	/	/	<1000	/
29	J2 black plastic socket	Cd	P	/	<100	P
		Cr(VI)	P	/	<1000	P
		Hg	P	/	<1000	P
		Pb	P	/	<1000	P
		PBBs	P	/	<1000	P
		PBDEs	P	/	<1000	P
30	Silvery metal contact pin	Cd	P	/	<100	P
		Cr(VI)	P	/	<1000	P
		Hg	P	/	<1000	P
		Pb	P	/	<1000	P
		PBBs	/	/	<1000	/
		PBDEs	/	/	<1000	/



No.	COMPONENTS	Item	Results of EDXRF (P/F/D)	Results of Testing (mg/kg)	Chemical testing limit (mg/kg)	Conclusion (P/F)
31	L1 gray magnet core	Cd	P	/	<100	P
		Cr(VI)	P	/	<1000	P
		Hg	P	/	<1000	P
		Pb	P	/	<1000	P
		PBBs	/	/	<1000	/
		PBDEs	/	/	<1000	/
32	Coppery metal wire core	Cd	P	/	<100	P
		Cr(VI)	P	/	<1000	P
		Hg	P	/	<1000	P
		Pb	P	/	<1000	P
		PBBs	/	/	<1000	/
		PBDEs	/	/	<1000	/
33	U2 black IC body	Cd	P	/	<100	P
		Cr(VI)	P	/	<1000	P
		Hg	P	/	<1000	P
		Pb	P	/	<1000	P
		PBBs	P	/	<1000	P
		PBDEs	P	/	<1000	P
34	U8 black IC body	Cd	P	/	<100	P
		Cr(VI)	P	/	<1000	P
		Hg	P	/	<1000	P
		Pb	P	/	<1000	P
		PBBs	P	/	<1000	P
		PBDEs	P	/	<1000	P
35	T1 black plastic shell	Cd	P	/	<100	P
		Cr(VI)	P	/	<1000	P
		Hg	P	/	<1000	P
		Pb	P	/	<1000	P
		PBBs	P	/	<1000	P
		PBDEs	P	/	<1000	P
36	Gray magnet core	Cd	P	/	<100	P
		Cr(VI)	P	/	<1000	P
		Hg	P	/	<1000	P
		Pb	P	/	<1000	P
		PBBs	/	/	<1000	/
		PBDEs	/	/	<1000	/



No.	COMPONENTS	Item	Results of EDXRF (P/F/D)	Results of Testing (mg/kg)	Chemical testing limit (mg/kg)	Conclusion (P/F)
37	Color metal wire core	Cd	P	/	<100	P
		Cr(VI)	P	/	<1000	P
		Hg	P	/	<1000	P
		Pb	P	/	<1000	P
		PBBs	/	/	<1000	/
		PBDEs	/	/	<1000	/
38	Black glue	Cd	P	/	<100	P
		Cr(VI)	P	/	<1000	P
		Hg	P	/	<1000	P
		Pb	P	/	<1000	P
		PBBs	P	/	<1000	P
		PBDEs	P	/	<1000	P
39	Silvery metal pin	Cd	P	/	<100	P
		Cr(VI)	P	/	<1000	P
		Hg	P	/	<1000	P
		Pb	P	/	<1000	P
		PBBs	/	/	<1000	/
		PBDEs	/	/	<1000	/
40	U1 black IC body	Cd	P	/	<100	P
		Cr(VI)	P	/	<1000	P
		Hg	P	/	<1000	P
		Pb	P	/	<1000	P
		PBBs	P	/	<1000	P
		PBDEs	P	/	<1000	P
41	Silvery metal pin	Cd	P	/	<100	P
		Cr(VI)	P	/	<1000	P
		Hg	P	/	<1000	P
		Pb	P	/	<1000	P
		PBBs	/	/	<1000	/
		PBDEs	/	/	<1000	/
42	Black metal heating sheet	Cd	P	/	<100	P
		Cr(VI)	P	/	<1000	P
		Hg	P	/	<1000	P
		Pb	P	/	<1000	P
		PBBs	/	/	<1000	/
		PBDEs	/	/	<1000	/



No.	COMPONENTS	Item	Results of EDXRF (P/F/D)	Results of Testing (mg/kg)	Chemical testing limit (mg/kg)	Conclusion (P/F)
43	White glue	Cd	P	/	<100	P
		Cr(VI)	P	/	<1000	P
		Hg	P	/	<1000	P
		Pb	P	/	<1000	P
		PBBs	P	/	<1000	P
		PBDEs	P	/	<1000	P
44	U7 black IC body	Cd	P	/	<100	P
		Cr(VI)	P	/	<1000	P
		Hg	P	/	<1000	P
		Pb	P	/	<1000	P
		PBBs	P	/	<1000	P
		PBDEs	P	/	<1000	P
45	Q3 black audion body	Cd	P	/	<100	P
		Cr(VI)	P	/	<1000	P
		Hg	P	/	<1000	P
		Pb	P	/	<1000	P
		PBBs	D	N.D.	<1000	P
		PBDEs	D	N.D.	<1000	P
46	Y2 silvery metal body	Cd	P	/	<100	P
		Cr(VI)	P	/	<1000	P
		Hg	P	/	<1000	P
		Pb	P	/	<1000	P
		PBBs	/	/	<1000	/
		PBDEs	/	/	<1000	/
47	SW1 silvery metal shell	Cd	P	/	<100	P
		Cr(VI)	D	Negative	<1000	P
		Hg	P	/	<1000	P
		Pb	P	/	<1000	P
		PBBs	/	/	<1000	/
		PBDEs	/	/	<1000	/
48	Black plastic key	Cd	P	/	<100	P
		Cr(VI)	P	/	<1000	P
		Hg	P	/	<1000	P
		Pb	P	/	<1000	P
		PBBs	D	N.D.	<1000	P
		PBDEs	D	N.D.	<1000	P



No.	COMPONENTS	Item	Results of EDXRF (P/F/D)	Results of Testing (mg/kg)	Chemical testing limit (mg/kg)	Conclusion (P/F)
49	PCB substrate	Cd	P	/	<100	P
		Cr(VI)	P	/	<1000	P
		Hg	P	/	<1000	P
		Pb	P	/	<1000	P
		PBBs	P	/	<1000	P
		PBDEs	P	/	<1000	P
50	Silvery metal buckle	Cd	P	/	<100	P
		Cr(VI)	P	/	<1000	P
		Hg	P	/	<1000	P
		Pb	P	/	<1000	P
		PBBs	/	/	<1000	/
		PBDEs	/	/	<1000	/
51	Silvery metal pin	Cd	P	/	<100	P
		Cr(VI)	P	/	<1000	P
		Hg	P	/	<1000	P
		Pb	P	/	<1000	P
		PBBs	/	/	<1000	/
		PBDEs	/	/	<1000	/
52	T3 black plastic shell	Cd	P	/	<100	P
		Cr(VI)	P	/	<1000	P
		Hg	P	/	<1000	P
		Pb	P	/	<1000	P
		PBBs	P	/	<1000	P
		PBDEs	P	/	<1000	P
53	Gray magnet core	Cd	P	/	<100	P
		Cr(VI)	P	/	<1000	P
		Hg	P	/	<1000	P
		Pb	P	/	<1000	P
		PBBs	/	/	<1000	/
		PBDEs	/	/	<1000	/
54	Color metal wire core	Cd	P	/	<100	P
		Cr(VI)	P	/	<1000	P
		Hg	P	/	<1000	P
		Pb	P	/	<1000	P
		PBBs	/	/	<1000	/
		PBDEs	/	/	<1000	/



No.	COMPONENTS	Item	Results of EDXRF (P/F/D)	Results of Testing (mg/kg)	Chemical testing limit (mg/kg)	Conclusion (P/F)
55	Black glue	Cd	P	/	<100	P
		Cr(VI)	P	/	<1000	P
		Hg	P	/	<1000	P
		Pb	P	/	<1000	P
		PBBs	P	/	<1000	P
		PBDEs	P	/	<1000	P
56	Silvery metal pin	Cd	P	/	<100	P
		Cr(VI)	P	/	<1000	P
		Hg	P	/	<1000	P
		Pb	P	/	<1000	P
		PBBs	/	/	<1000	/
		PBDEs	/	/	<1000	/
57	D12 black diode body	Cd	P	/	<100	P
		Cr(VI)	P	/	<1000	P
		Hg	P	/	<1000	P
		Pb	P	/	<1000	P
		PBBs	P	/	<1000	P
		PBDEs	P	/	<1000	P
58	RJ2 black plastic socket	Cd	P	/	<100	P
		Cr(VI)	P	/	<1000	P
		Hg	P	/	<1000	P
		Pb	P	/	<1000	P
		PBBs	P	/	<1000	P
		PBDEs	P	/	<1000	P
59	Yellow LED body	Cd	P	/	<100	P
		Cr(VI)	P	/	<1000	P
		Hg	P	/	<1000	P
		Pb	P	/	<1000	P
		PBBs	D	N.D.	<1000	P
		PBDEs	D	N.D.	<1000	P
60	Green LED body	Cd	P	/	<100	P
		Cr(VI)	P	/	<1000	P
		Hg	P	/	<1000	P
		Pb	P	/	<1000	P
		PBBs	D	N.D.	<1000	P
		PBDEs	D	N.D.	<1000	P



No.	COMPONENTS	Item	Results of EDXRF (P/F/D)	Results of Testing (mg/kg)	Chemical testing limit (mg/kg)	Conclusion (P/F)
61	Silvery metal pin	Cd	P	/	<100	P
		Cr(VI)	P	/	<1000	P
		Hg	P	/	<1000	P
		Pb	P	/	<1000	P
		PBBs	/	/	<1000	/
		PBDEs	/	/	<1000	/
62	LED1 black plastic shell	Cd	P	/	<100	P
		Cr(VI)	P	/	<1000	P
		Hg	P	/	<1000	P
		Pb	P	/	<1000	P
		PBBs	D	N.D.	<1000	P
		PBDEs	D	N.D.	<1000	P
63	Green LED body	Cd	P	/	<100	P
		Cr(VI)	P	/	<1000	P
		Hg	P	/	<1000	P
		Pb	P	/	<1000	P
		PBBs	P	/	<1000	P
		PBDEs	P	/	<1000	P
64	Silvery metal pin	Cd	P	/	<100	P
		Cr(VI)	P	/	<1000	P
		Hg	P	/	<1000	P
		Pb	P	/	<1000	P
		PBBs	/	/	<1000	/
		PBDEs	/	/	<1000	/
65	Adaptor black plastic face shell	Cd	P	/	<100	P
		Cr(VI)	P	/	<1000	P
		Hg	P	/	<1000	P
		Pb	P	/	<1000	P
		PBBs	P	/	<1000	P
		PBDEs	P	/	<1000	P
66	Black plastic back shell	Cd	P	/	<100	P
		Cr(VI)	P	/	<1000	P
		Hg	P	/	<1000	P
		Pb	P	/	<1000	P
		PBBs	P	/	<1000	P
		PBDEs	P	/	<1000	P



No.	COMPONENTS	Item	Results of EDXRF (P/F/D)	Results of Testing (mg/kg)	Chemical testing limit (mg/kg)	Conclusion (P/F)
67	Green label	Cd	P	/	<100	P
		Cr(VI)	P	/	<1000	P
		Hg	P	/	<1000	P
		Pb	P	/	<1000	P
		PBBs	P	/	<1000	P
		PBDEs	P	/	<1000	P
68	Silvery metal screw	Cd	P	/	<100	P
		Cr(VI)	P	/	<1000	P
		Hg	P	/	<1000	P
		Pb	P	/	<1000	P
		PBBs	/	/	<1000	/
		PBDEs	/	/	<1000	/
69	Black rubber foot mat	Cd	P	/	<100	P
		Cr(VI)	P	/	<1000	P
		Hg	P	/	<1000	P
		Pb	P	/	<1000	P
		PBBs	P	/	<1000	P
		PBDEs	P	/	<1000	P
70	Green plastic screw cover	Cd	P	/	<100	P
		Cr(VI)	P	/	<1000	P
		Hg	P	/	<1000	P
		Pb	P	/	<1000	P
		PBBs	P	/	<1000	P
		PBDEs	P	/	<1000	P
71	Black plastic insulation sheet	Cd	P	/	<100	P
		Cr(VI)	P	/	<1000	P
		Hg	P	/	<1000	P
		Pb	P	/	<1000	P
		PBBs	D	N.D.	<1000	P
		PBDEs	D	N.D.	<1000	P
72	Silvery metal shell	Cd	P	/	<100	P
		Cr(VI)	P	/	<1000	P
		Hg	P	/	<1000	P
		Pb	P	/	<1000	P
		PBBs	/	/	<1000	/
		PBDEs	/	/	<1000	/



No.	COMPONENTS	Item	Results of EDXRF (P/F/D)	Results of Testing (mg/kg)	Chemical testing limit (mg/kg)	Conclusion (P/F)
73	Yellow tape	Cd	P	/	<100	P
		Cr(VI)	P	/	<1000	P
		Hg	P	/	<1000	P
		Pb	P	/	<1000	P
		PBBs	P	/	<1000	P
		PBDEs	P	/	<1000	P
74	Soldering tin	Cd	P	/	<100	P
		Cr(VI)	P	/	<1000	P
		Hg	P	/	<1000	P
		Pb	P	/	<1000	P
		PBBs	/	/	<1000	/
		PBDEs	/	/	<1000	/
75	PCB substrate	Cd	P	/	<100	P
		Cr(VI)	P	/	<1000	P
		Hg	P	/	<1000	P
		Pb	P	/	<1000	P
		PBBs	D	N.D.	<1000	P
		PBDEs	D	N.D.	<1000	P
76	Green coating	Cd	P	/	<100	P
		Cr(VI)	P	/	<1000	P
		Hg	P	/	<1000	P
		Pb	P	/	<1000	P
		PBBs	P	/	<1000	P
		PBDEs	P	/	<1000	P
77	Copper foil	Cd	P	/	<100	P
		Cr(VI)	P	/	<1000	P
		Hg	P	/	<1000	P
		Pb	P	/	<1000	P
		PBBs	/	/	<1000	/
		PBDEs	/	/	<1000	/
78	Soldering tin	Cd	P	/	<100	P
		Cr(VI)	P	/	<1000	P
		Hg	P	/	<1000	P
		Pb	P	/	<1000	P
		PBBs	/	/	<1000	/
		PBDEs	/	/	<1000	/



No.	COMPONENTS	Item	Results of EDXRF (P/F/D)	Results of Testing (mg/kg)	Chemical testing limit (mg/kg)	Conclusion (P/F)
79	Silvery metal sheet	Cd	P	/	<100	P
		Cr(VI)	P	/	<1000	P
		Hg	P	/	<1000	P
		Pb	P	/	<1000	P
		PBBs	/	/	<1000	/
		PBDEs	/	/	<1000	/
80	Silvery metal pin	Cd	P	/	<100	P
		Cr(VI)	P	/	<1000	P
		Hg	P	/	<1000	P
		Pb	P	/	<1000	P
		PBBs	/	/	<1000	/
		PBDEs	/	/	<1000	/
81	Black audion body	Cd	P	/	<100	P
		Cr(VI)	P	/	<1000	P
		Hg	P	/	<1000	P
		Pb	P	/	<1000	P
		PBBs	P	/	<1000	P
		PBDEs	P	/	<1000	P
82	Gray magnet core	Cd	P	/	<100	P
		Cr(VI)	P	/	<1000	P
		Hg	P	/	<1000	P
		Pb	P	/	<1000	P
		PBBs	/	/	<1000	/
		PBDEs	/	/	<1000	/
83	Silvery metal pin	Cd	P	/	<100	P
		Cr(VI)	P	/	<1000	P
		Hg	P	/	<1000	P
		Pb	P	/	<1000	P
		PBBs	/	/	<1000	/
		PBDEs	/	/	<1000	/
84	Silvery metal screw	Cd	P	/	<100	P
		Cr(VI)	P	/	<1000	P
		Hg	P	/	<1000	P
		Pb	P	/	<1000	P
		PBBs	/	/	<1000	/
		PBDEs	/	/	<1000	/



No.	COMPONENTS	Item	Results of EDXRF (P/F/D)	Results of Testing (mg/kg)	Chemical testing limit (mg/kg)	Conclusion (P/F)
85	Blue rubber mat	Cd	P	/	<100	P
		Cr(VI)	P	/	<1000	P
		Hg	P	/	<1000	P
		Pb	P	/	<1000	P
		PBBs	D	N.D.	<1000	P
		PBDEs	D	N.D.	<1000	P
86	Black components body	Cd	P	/	<100	P
		Cr(VI)	P	/	<1000	P
		Hg	P	/	<1000	P
		Pb	P	/	<1000	P
		PBBs	P	/	<1000	P
		PBDEs	P	/	<1000	P
87	Silvery metal pin	Cd	P	/	<100	P
		Cr(VI)	P	/	<1000	P
		Hg	P	/	<1000	P
		Pb	P	/	<1000	P
		PBBs	/	/	<1000	/
		PBDEs	/	/	<1000	/
88	CON1 black plastic socket	Cd	P	/	<100	P
		Cr(VI)	P	/	<1000	P
		Hg	P	/	<1000	P
		Pb	P	/	<1000	P
		PBBs	D	N.D.	<1000	P
		PBDEs	D	N.D.	<1000	P
89	Silvery metal contact pin	Cd	P	/	<100	P
		Cr(VI)	P	/	<1000	P
		Hg	P	/	<1000	P
		Pb	P	/	<1000	P
		PBBs	/	/	<1000	/
		PBDEs	/	/	<1000	/
90	Silvery metal pin	Cd	P	/	<100	P
		Cr(VI)	P	/	<1000	P
		Hg	P	/	<1000	P
		Pb	P	/	<1000	P
		PBBs	/	/	<1000	/
		PBDEs	/	/	<1000	/



No.	COMPONENTS	Item	Results of EDXRF (P/F/D)	Results of Testing (mg/kg)	Chemical testing limit (mg/kg)	Conclusion (P/F)
91	RY1 blue resistor body	Cd	P	/	<100	P
		Cr(VI)	P	/	<1000	P
		Hg	P	/	<1000	P
		Pb	P	/	<1000	P
		PBBs	P	/	<1000	P
		PBDEs	P	/	<1000	P
92	Silvery metal pin	Cd	P	/	<100	P
		Cr(VI)	P	/	<1000	P
		Hg	P	/	<1000	P
		Pb	P	/	<1000	P
		PBBs	/	/	<1000	/
		PBDEs	/	/	<1000	/
93	RT1 black resistor body	Cd	P	/	<100	P
		Cr(VI)	P	/	<1000	P
		Hg	P	/	<1000	P
		Pb	P	/	<1000	P
		PBBs	P	/	<1000	P
		PBDEs	P	/	<1000	P
94	Silvery metal pin	Cd	P	/	<100	P
		Cr(VI)	P	/	<1000	P
		Hg	P	/	<1000	P
		Pb	P	/	<1000	P
		PBBs	/	/	<1000	/
		PBDEs	/	/	<1000	/
95	Inductor green coating	Cd	P	/	<100	P
		Cr(VI)	P	/	<1000	P
		Hg	P	/	<1000	P
		Pb	P	/	<1000	P
		PBBs	P	/	<1000	P
		PBDEs	P	/	<1000	P
96	Gray magnet core	Cd	P	/	<100	P
		Cr(VI)	P	/	<1000	P
		Hg	P	/	<1000	P
		Pb	P	/	<1000	P
		PBBs	/	/	<1000	/
		PBDEs	/	/	<1000	/



No.	COMPONENTS	Item	Results of EDXRF (P/F/D)	Results of Testing (mg/kg)	Chemical testing limit (mg/kg)	Conclusion (P/F)
97	Coppery metal thick wire core	Cd	P	/	<100	P
		Cr(VI)	P	/	<1000	P
		Hg	P	/	<1000	P
		Pb	P	/	<1000	P
		PBBs	/	/	<1000	/
		PBDEs	/	/	<1000	/
98	Coppery metal thin wire core	Cd	P	/	<100	P
		Cr(VI)	P	/	<1000	P
		Hg	P	/	<1000	P
		Pb	P	/	<1000	P
		PBBs	/	/	<1000	/
		PBDEs	/	/	<1000	/
99	White glue	Cd	P	/	<100	P
		Cr(VI)	P	/	<1000	P
		Hg	P	/	<1000	P
		Pb	P	/	<1000	P
		PBBs	P	/	<1000	P
		PBDEs	P	/	<1000	P
100	LF2 yellow tape	Cd	P	/	<100	P
		Cr(VI)	P	/	<1000	P
		Hg	P	/	<1000	P
		Pb	P	/	<1000	P
		PBBs	P	/	<1000	P
		PBDEs	P	/	<1000	P
101	Green coating	Cd	P	/	<100	P
		Cr(VI)	P	/	<1000	P
		Hg	P	/	<1000	P
		Pb	P	/	<1000	P
		PBBs	P	/	<1000	P
		PBDEs	P	/	<1000	P
102	Gray magnet core	Cd	P	/	<100	P
		Cr(VI)	D	Negative	<1000	P
		Hg	P	/	<1000	P
		Pb	P	/	<1000	P
		PBBs	/	/	<1000	/
		PBDEs	/	/	<1000	/



No.	COMPONENTS	Item	Results of EDXRF (P/F/D)	Results of Testing (mg/kg)	Chemical testing limit (mg/kg)	Conclusion (P/F)
103	Coppery metal wire core	Cd	P	/	<100	P
		Cr(VI)	P	/	<1000	P
		Hg	P	/	<1000	P
		Pb	P	/	<1000	P
		PBBs	/	/	<1000	/
		PBDEs	/	/	<1000	/
104	CX1 yellow plastic shell	Cd	P	/	<100	P
		Cr(VI)	P	/	<1000	P
		Hg	P	/	<1000	P
		Pb	P	/	<1000	P
		PBBs	D	N.D.	<1000	P
		PBDEs	D	N.D.	<1000	P
105	Gray tape	Cd	P	/	<100	P
		Cr(VI)	P	/	<1000	P
		Hg	P	/	<1000	P
		Pb	P	/	<1000	P
		PBBs	P	/	<1000	P
		PBDEs	P	/	<1000	P
106	Yellow packaging glue	Cd	P	/	<100	P
		Cr(VI)	P	/	<1000	P
		Hg	P	/	<1000	P
		Pb	P	/	<1000	P
		PBBs	D	N.D.	<1000	P
		PBDEs	D	N.D.	<1000	P
107	Silvery metal pin	Cd	P	/	<100	P
		Cr(VI)	P	/	<1000	P
		Hg	P	/	<1000	P
		Pb	P	/	<1000	P
		PBBs	/	/	<1000	/
		PBDEs	/	/	<1000	/
108	C3 red capacitor body	Cd	P	/	<100	P
		Cr(VI)	P	/	<1000	P
		Hg	P	/	<1000	P
		Pb	P	/	<1000	P
		PBBs	P	/	<1000	P
		PBDEs	P	/	<1000	P



No.	COMPONENTS	Item	Results of EDXRF (P/F/D)	Results of Testing (mg/kg)	Chemical testing limit (mg/kg)	Conclusion (P/F)
109	L1 light green coating	Cd	P	/	<100	P
		Cr(VI)	P	/	<1000	P
		Hg	P	/	<1000	P
		Pb	P	/	<1000	P
		PBBs	P	/	<1000	P
		PBDEs	P	/	<1000	P
110	Gray magnet core	Cd	P	/	<100	P
		Cr(VI)	P	/	<1000	P
		Hg	P	/	<1000	P
		Pb	P	/	<1000	P
		PBBs	/	/	<1000	/
		PBDEs	/	/	<1000	/
111	Coppery metal wire core	Cd	P	/	<100	P
		Cr(VI)	P	/	<1000	P
		Hg	P	/	<1000	P
		Pb	P	/	<1000	P
		PBBs	/	/	<1000	/
		PBDEs	/	/	<1000	/
112	L2 yellow tape	Cd	P	/	<100	P
		Cr(VI)	P	/	<1000	P
		Hg	P	/	<1000	P
		Pb	P	/	<1000	P
		PBBs	P	/	<1000	P
		PBDEs	P	/	<1000	P
113	Gray magnet core	Cd	P	/	<100	P
		Cr(VI)	P	/	<1000	P
		Hg	P	/	<1000	P
		Pb	P	/	<1000	P
		PBBs	/	/	<1000	/
		PBDEs	/	/	<1000	/
114	Black plastic skeleton	Cd	P	/	<100	P
		Cr(VI)	P	/	<1000	P
		Hg	P	/	<1000	P
		Pb	P	/	<1000	P
		PBBs	P	/	<1000	P
		PBDEs	P	/	<1000	P



No.	COMPONENTS	Item	Results of EDXRF (P/F/D)	Results of Testing (mg/kg)	Chemical testing limit (mg/kg)	Conclusion (P/F)
115	Coppery metal wire core	Cd	P	/	<100	P
		Cr(VI)	P	/	<1000	P
		Hg	P	/	<1000	P
		Pb	P	/	<1000	P
		PBBs	/	/	<1000	/
		PBDEs	/	/	<1000	/
116	Transparent plastic drivepipe	Cd	P	/	<100	P
		Cr(VI)	P	/	<1000	P
		Hg	P	/	<1000	P
		Pb	P	/	<1000	P
		PBBs	P	/	<1000	P
		PBDEs	P	/	<1000	P
117	Silvery metal pin	Cd	P	/	<100	P
		Cr(VI)	P	/	<1000	P
		Hg	P	/	<1000	P
		Pb	P	/	<1000	P
		PBBs	/	/	<1000	/
		PBDEs	/	/	<1000	/
118	EC1 brown plastic outer jacket	Cd	P	/	<100	P
		Cr(VI)	P	/	<1000	P
		Hg	P	/	<1000	P
		Pb	P	/	<1000	P
		PBBs	P	/	<1000	P
		PBDEs	P	/	<1000	P
119	Silvery metal shell	Cd	P	/	<100	P
		Cr(VI)	P	/	<1000	P
		Hg	P	/	<1000	P
		Pb	P	/	<1000	P
		PBBs	/	/	<1000	/
		PBDEs	/	/	<1000	/
120	Black rubber plug	Cd	P	/	<100	P
		Cr(VI)	P	/	<1000	P
		Hg	P	/	<1000	P
		Pb	P	/	<1000	P
		PBBs	P	/	<1000	P
		PBDEs	P	/	<1000	P



No.	COMPONENTS	Item	Results of EDXRF (P/F/D)	Results of Testing (mg/kg)	Chemical testing limit (mg/kg)	Conclusion (P/F)
121	Yellow paper	Cd	P	/	<100	P
		Cr(VI)	P	/	<1000	P
		Hg	P	/	<1000	P
		Pb	P	/	<1000	P
		PBBs	P	/	<1000	P
		PBDEs	P	/	<1000	P
122	Gray metal foil	Cd	P	/	<100	P
		Cr(VI)	P	/	<1000	P
		Hg	P	/	<1000	P
		Pb	P	/	<1000	P
		PBBs	/	/	<1000	/
		PBDEs	/	/	<1000	/
123	Silvery metal pin	Cd	P	/	<100	P
		Cr(VI)	P	/	<1000	P
		Hg	P	/	<1000	P
		Pb	P	/	<1000	P
		PBBs	/	/	<1000	/
		PBDEs	/	/	<1000	/
124	Gray rubber cover	Cd	P	/	<100	P
		Cr(VI)	P	/	<1000	P
		Hg	P	/	<1000	P
		Pb	P	/	<1000	P
		PBBs	P	/	<1000	P
		PBDEs	P	/	<1000	P
125	D5 black diode body	Cd	P	/	<100	P
		Cr(VI)	P	/	<1000	P
		Hg	P	/	<1000	P
		Pb	P	/	<1000	P
		PBBs	P	/	<1000	P
		PBDEs	P	/	<1000	P
126	Silvery metal pin	Cd	P	/	<100	P
		Cr(VI)	P	/	<1000	P
		Hg	P	/	<1000	P
		Pb	P	/	<1000	P
		PBBs	/	/	<1000	/
		PBDEs	/	/	<1000	/



No.	COMPONENTS	Item	Results of EDXRF (P/F/D)	Results of Testing (mg/kg)	Chemical testing limit (mg/kg)	Conclusion (P/F)
127	R12 black plastic drivepipe	Cd	P	/	<100	P
		Cr(VI)	P	/	<1000	P
		Hg	P	/	<1000	P
		Pb	P	/	<1000	P
		PBBs	D	N.D.	<1000	P
		PBDEs	D	N.D.	<1000	P
128	Gray resistor body	Cd	P	/	<100	P
		Cr(VI)	P	/	<1000	P
		Hg	P	/	<1000	P
		Pb	P	/	<1000	P
		PBBs	P	/	<1000	P
		PBDEs	P	/	<1000	P
129	Silvery metal pin	Cd	P	/	<100	P
		Cr(VI)	P	/	<1000	P
		Hg	P	/	<1000	P
		Pb	P	/	<1000	P
		PBBs	/	/	<1000	/
		PBDEs	/	/	<1000	/
130	D6 black diode body	Cd	P	/	<100	P
		Cr(VI)	P	/	<1000	P
		Hg	P	/	<1000	P
		Pb	P	/	<1000	P
		PBBs	D	N.D.	<1000	P
		PBDEs	D	N.D.	<1000	P
131	Silvery metal pin	Cd	P	/	<100	P
		Cr(VI)	P	/	<1000	P
		Hg	P	/	<1000	P
		Pb	P	/	<1000	P
		PBBs	/	/	<1000	/
		PBDEs	/	/	<1000	/
132	C20 blue capacitor body	Cd	P	/	<100	P
		Cr(VI)	P	/	<1000	P
		Hg	P	/	<1000	P
		Pb	P	/	<1000	P
		PBBs	P	/	<1000	P
		PBDEs	P	/	<1000	P



No.	COMPONENTS	Item	Results of EDXRF (P/F/D)	Results of Testing (mg/kg)	Chemical testing limit (mg/kg)	Conclusion (P/F)
133	LED1 transparent plastic body	Cd	P	/	<100	P
		Cr(VI)	P	/	<1000	P
		Hg	P	/	<1000	P
		Pb	P	/	<1000	P
		PBBs	D	N.D.	<1000	P
		PBDEs	D	N.D.	<1000	P
134	Silvery metal pin	Cd	P	/	<100	P
		Cr(VI)	P	/	<1000	P
		Hg	P	/	<1000	P
		Pb	P	/	<1000	P
		PBBs	/	/	<1000	/
		PBDEs	/	/	<1000	/
135	T1 yellow tape	Cd	P	/	<100	P
		Cr(VI)	P	/	<1000	P
		Hg	P	/	<1000	P
		Pb	P	/	<1000	P
		PBBs	P	/	<1000	P
		PBDEs	P	/	<1000	P
136	Black plastic skeleton	Cd	P	/	<100	P
		Cr(VI)	P	/	<1000	P
		Hg	P	/	<1000	P
		Pb	P	/	<1000	P
		PBBs	P	/	<1000	P
		PBDEs	P	/	<1000	P
137	Gray magnet core	Cd	P	/	<100	P
		Cr(VI)	P	/	<1000	P
		Hg	P	/	<1000	P
		Pb	P	/	<1000	P
		PBBs	/	/	<1000	/
		PBDEs	/	/	<1000	/
138	Coppery metal wire core	Cd	P	/	<100	P
		Cr(VI)	P	/	<1000	P
		Hg	P	/	<1000	P
		Pb	P	/	<1000	P
		PBBs	/	/	<1000	/
		PBDEs	/	/	<1000	/



No.	COMPONENTS	Item	Results of EDXRF (P/F/D)	Results of Testing (mg/kg)	Chemical testing limit (mg/kg)	Conclusion (P/F)
139	Transparent plastic drivepipe	Cd	P	/	<100	P
		Cr(VI)	P	/	<1000	P
		Hg	P	/	<1000	P
		Pb	P	/	<1000	P
		PBBs	P	/	<1000	P
		PBDEs	P	/	<1000	P
140	Silvery metal pin	Cd	P	/	<100	P
		Cr(VI)	P	/	<1000	P
		Hg	P	/	<1000	P
		Pb	P	/	<1000	P
		PBBs	/	/	<1000	/
		PBDEs	/	/	<1000	/
141	EC2 black plastic drivepipe	Cd	P	/	<100	P
		Cr(VI)	P	/	<1000	P
		Hg	P	/	<1000	P
		Pb	P	/	<1000	P
		PBBs	D	N.D.	<1000	P
		PBDEs	D	N.D.	<1000	P
142	U4 black IC body	Cd	P	/	<100	P
		Cr(VI)	P	/	<1000	P
		Hg	P	/	<1000	P
		Pb	P	/	<1000	P
		PBBs	D	N.D.	<1000	P
		PBDEs	D	N.D.	<1000	P
143	Silvery metal pin	Cd	P	/	<100	P
		Cr(VI)	P	/	<1000	P
		Hg	P	/	<1000	P
		Pb	P	/	<1000	P
		PBBs	/	/	<1000	/
		PBDEs	/	/	<1000	/
144	EC5 green plastic outer jacket	Cd	P	/	<100	P
		Cr(VI)	P	/	<1000	P
		Hg	P	/	<1000	P
		Pb	P	/	<1000	P
		PBBs	P	/	<1000	P
		PBDEs	P	/	<1000	P



No.	COMPONENTS	Item	Results of EDXRF (P/F/D)	Results of Testing (mg/kg)	Chemical testing limit (mg/kg)	Conclusion (P/F)
145	Inductor green coating	Cd	P	/	<100	P
		Cr(VI)	P	/	<1000	P
		Hg	P	/	<1000	P
		Pb	P	/	<1000	P
		PBBs	P	/	<1000	P
		PBDEs	P	/	<1000	P
146	Gray magnet core	Cd	P	/	<100	P
		Cr(VI)	P	/	<1000	P
		Hg	P	/	<1000	P
		Pb	P	/	<1000	P
		PBBs	/	/	<1000	/
		PBDEs	/	/	<1000	/
147	Red metal wire core	Cd	P	/	<100	P
		Cr(VI)	P	/	<1000	P
		Hg	P	/	<1000	P
		Pb	P	/	<1000	P
		PBBs	/	/	<1000	/
		PBDEs	/	/	<1000	/
148	Coppery metal wire core	Cd	P	/	<100	P
		Cr(VI)	P	/	<1000	P
		Hg	P	/	<1000	P
		Pb	P	/	<1000	P
		PBBs	/	/	<1000	/
		PBDEs	/	/	<1000	/
149	D1 black diode body	Cd	P	/	<100	P
		Cr(VI)	P	/	<1000	P
		Hg	P	/	<1000	P
		Pb	P	/	<1000	P
		PBBs	P	/	<1000	P
		PBDEs	P	/	<1000	P
150	D4 glass diode body	Cd	P	/	<100	P
		Cr(VI)	P	/	<1000	P
		Hg	P	/	<1000	P
		Pb	#P	/	<1000	#P
		PBBs	P	/	<1000	P
		PBDEs	P	/	<1000	P



No.	COMPONENTS	Item	Results of EDXRF (P/F/D)	Results of Testing (mg/kg)	Chemical testing limit (mg/kg)	Conclusion (P/F)
151	Black rubber foot mat	Cd	P	/	<100	P
		Cr(VI)	P	/	<1000	P
		Hg	P	/	<1000	P
		Pb	P	/	<1000	P
		PBBs	P	/	<1000	P
		PBDEs	P	/	<1000	P
152	U1 black IC body	Cd	P	/	<100	P
		Cr(VI)	P	/	<1000	P
		Hg	P	/	<1000	P
		Pb	P	/	<1000	P
		PBBs	P	/	<1000	P
		PBDEs	P	/	<1000	P
153	D3 black diode body	Cd	P	/	<100	P
		Cr(VI)	P	/	<1000	P
		Hg	P	/	<1000	P
		Pb	D	$\wedge 1.25 \times 10^3$	<1000	P
		PBBs	P	/	<1000	P
		PBDEs	P	/	<1000	P
154	Black resistor body	Cd	P	/	<100	P
		Cr(VI)	P	/	<1000	P
		Hg	P	/	<1000	P
		Pb	P	/	<1000	P
		PBBs	P	/	<1000	P
		PBDEs	P	/	<1000	P
155	Yellow capacitor body	Cd	P	/	<100	P
		Cr(VI)	P	/	<1000	P
		Hg	P	/	<1000	P
		Pb	P	/	<1000	P
		PBBs	P	/	<1000	P
		PBDEs	P	/	<1000	P
156	Handwork soldering tin	Cd	P	/	<100	P
		Cr(VI)	P	/	<1000	P
		Hg	P	/	<1000	P
		Pb	P	/	<1000	P
		PBBs	/	/	<1000	/
		PBDEs	/	/	<1000	/



No.	COMPONENTS	Item	Results of EDXRF (P/F/D)	Results of Testing (mg/kg)	Chemical testing limit (mg/kg)	Conclusion (P/F)
157	Black plastic outer jacket	Cd	P	/	<100	P
		Cr(VI)	P	/	<1000	P
		Hg	P	/	<1000	P
		Pb	P	/	<1000	P
		PBBs	P	/	<1000	P
		PBDEs	P	/	<1000	P
158	Copper metal wire core	Cd	P	/	<100	P
		Cr(VI)	P	/	<1000	P
		Hg	P	/	<1000	P
		Pb	P	/	<1000	P
		PBBs	/	/	<1000	/
		PBDEs	/	/	<1000	/
159	Black plastic plug cover	Cd	P	/	<100	P
		Cr(VI)	P	/	<1000	P
		Hg	P	/	<1000	P
		Pb	P	/	<1000	P
		PBBs	P	/	<1000	P
		PBDEs	P	/	<1000	P
160	Silvery metal plug	Cd	P	/	<100	P
		Cr(VI)	P	/	<1000	P
		Hg	P	/	<1000	P
		Pb	P	/	<1000	P
		PBBs	/	/	<1000	/
		PBDEs	/	/	<1000	/
161	Black plastic inner core	Cd	P	/	<100	P
		Cr(VI)	P	/	<1000	P
		Hg	P	/	<1000	P
		Pb	P	/	<1000	P
		PBBs	D	N.D.	<1000	P
		PBDEs	D	N.D.	<1000	P
162	Soldering tin	Cd	P	/	<100	P
		Cr(VI)	P	/	<1000	P
		Hg	P	/	<1000	P
		Pb	D	185	<1000	P
		PBBs	/	/	<1000	/
		PBDEs	/	/	<1000	/



No.	COMPONENTS	Item	Results of EDXRF (P/F/D)	Results of Testing (mg/kg)	Chemical testing limit (mg/kg)	Conclusion (P/F)
163	Black plastic bundle jacket	Cd	P	/	<100	P
		Cr(VI)	P	/	<1000	P
		Hg	P	/	<1000	P
		Pb	P	/	<1000	P
		PBBs	P	/	<1000	P
		PBDEs	P	/	<1000	P
164	Silvery metal wire core	Cd	P	/	<100	P
		Cr(VI)	P	/	<1000	P
		Hg	P	/	<1000	P
		Pb	P	/	<1000	P
		PBBs	/	/	<1000	/
		PBDEs	/	/	<1000	/
165	Power line black plastic plug cover	Cd	P	/	<100	P
		Cr(VI)	P	/	<1000	P
		Hg	P	/	<1000	P
		Pb	P	/	<1000	P
		PBBs	P	/	<1000	P
		PBDEs	P	/	<1000	P
166	Silvery metal contact pin	Cd	P	/	<100	P
		Cr(VI)	P	/	<1000	P
		Hg	P	/	<1000	P
		Pb	P	/	<1000	P
		PBBs	/	/	<1000	/
		PBDEs	/	/	<1000	/
167	Silvery metal shell	Cd	P	/	<100	P
		Cr(VI)	P	/	<1000	P
		Hg	P	/	<1000	P
		Pb	P	/	<1000	P
		PBBs	/	/	<1000	/
		PBDEs	/	/	<1000	/
168	Black plastic skeleton	Cd	P	/	<100	P
		Cr(VI)	P	/	<1000	P
		Hg	P	/	<1000	P
		Pb	P	/	<1000	P
		PBBs	D	N.D.	<1000	P
		PBDEs	D	N.D.	<1000	P



No.	COMPONENTS	Item	Results of EDXRF (P/F/D)	Results of Testing (mg/kg)	Chemical testing limit (mg/kg)	Conclusion (P/F)
169	Black plastic outer jacket	Cd	P	/	<100	P
		Cr(VI)	P	/	<1000	P
		Hg	P	/	<1000	P
		Pb	P	/	<1000	P
		PBBs	P	/	<1000	P
		PBDEs	P	/	<1000	P
170	Brown plastic wire jacket	Cd	P	/	<100	P
		Cr(VI)	P	/	<1000	P
		Hg	P	/	<1000	P
		Pb	P	/	<1000	P
		PBBs	P	/	<1000	P
		PBDEs	P	/	<1000	P
171	Blue plastic wire jacket	Cd	P	/	<100	P
		Cr(VI)	P	/	<1000	P
		Hg	P	/	<1000	P
		Pb	P	/	<1000	P
		PBBs	P	/	<1000	P
		PBDEs	P	/	<1000	P
172	Yellow green plastic wire jacket	Cd	P	/	<100	P
		Cr(VI)	P	/	<1000	P
		Hg	P	/	<1000	P
		Pb	P	/	<1000	P
		PBBs	P	/	<1000	P
		PBDEs	P	/	<1000	P
173	Coppery metal wire core	Cd	P	/	<100	P
		Cr(VI)	P	/	<1000	P
		Hg	P	/	<1000	P
		Pb	P	/	<1000	P
		PBBs	/	/	<1000	/
		PBDEs	/	/	<1000	/
174	Black plastic plug cover	Cd	P	/	<100	P
		Cr(VI)	P	/	<1000	P
		Hg	P	/	<1000	P
		Pb	P	/	<1000	P
		PBBs	P	/	<1000	P
		PBDEs	P	/	<1000	P



No.	COMPONENTS	Item	Results of EDXRF (P/F/D)	Results of Testing (mg/kg)	Chemical testing limit (mg/kg)	Conclusion (P/F)
175	White plastic plug cover	Cd	P	/	<100	P
		Cr(VI)	P	/	<1000	P
		Hg	P	/	<1000	P
		Pb	P	/	<1000	P
		PBBs	D	N.D.	<1000	P
		PBDEs	D	N.D.	<1000	P
176	Copper metal contact pin	Cd	P	/	<100	P
		Cr(VI)	P	/	<1000	P
		Hg	P	/	<1000	P
		Pb	P	/	<1000	P
		PBBs	/	/	<1000	/
		PBDEs	/	/	<1000	/
177	Black plastic bundle jacket	Cd	P	/	<100	P
		Cr(VI)	P	/	<1000	P
		Hg	P	/	<1000	P
		Pb	P	/	<1000	P
		PBBs	P	/	<1000	P
		PBDEs	P	/	<1000	P
178	Silvery metal wire core	Cd	P	/	<100	P
		Cr(VI)	P	/	<1000	P
		Hg	P	/	<1000	P
		Pb	P	/	<1000	P
		PBBs	/	/	<1000	/
		PBDEs	/	/	<1000	/



Remark:

- (1) It is the result on total Br while test PBBs and PBDEs by EDXRF. It is the result on total Cr while test Hexavalent Chromium by EDXRF.
- (2) Results are obtained by EDXRF for primary screening, and chemical testing by ICP (for Cd, Pb, Hg), UV-VIS (Cr(VI)) and GCMS (for PBBs, PBDEs) is recommended to be performed, if the concentration exceeds the below warning value (unit:mg/kg)

Element	Polymer	Metal	Composite Materials
Cd	$P \leq 70-3\sigma < D < 130+3\sigma \leq F$	$P \leq 70-3\sigma < D < 130+3\sigma \leq F$	$P \leq 50-3\sigma < D < 150+3\sigma \leq F$
Pb	$P \leq 700-3\sigma < D < 1300+3\sigma \leq F$	$P \leq 700-3\sigma < D < 1300+3\sigma \leq F$	$P \leq 500-3\sigma < D < 1500+3\sigma \leq F$
Hg	$P \leq 700-3\sigma < D < 1300+3\sigma \leq F$	$P \leq 700-3\sigma < D < 1300+3\sigma \leq F$	$P \leq 500-3\sigma < D < 1500+3\sigma \leq F$
Br	$P \leq 300-3\sigma < D$	----	$P \leq 250-3\sigma < D$
Cr	$P \leq 700-3\sigma < D$	$P \leq 700-3\sigma < D$	$P \leq 500-3\sigma < D$

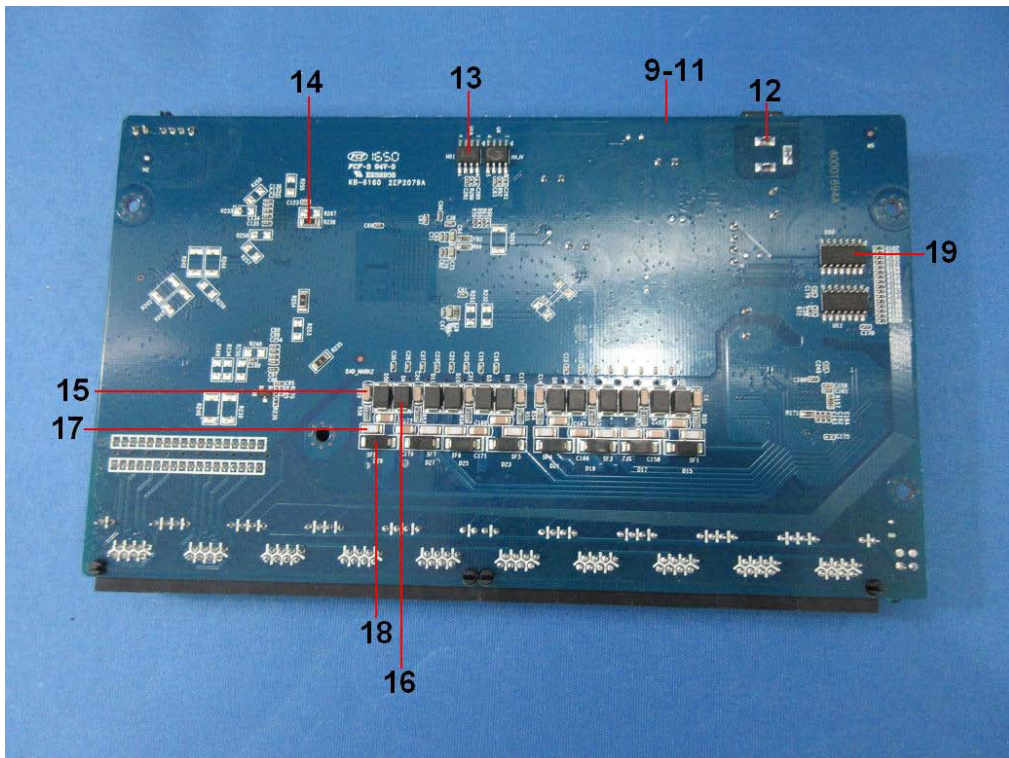
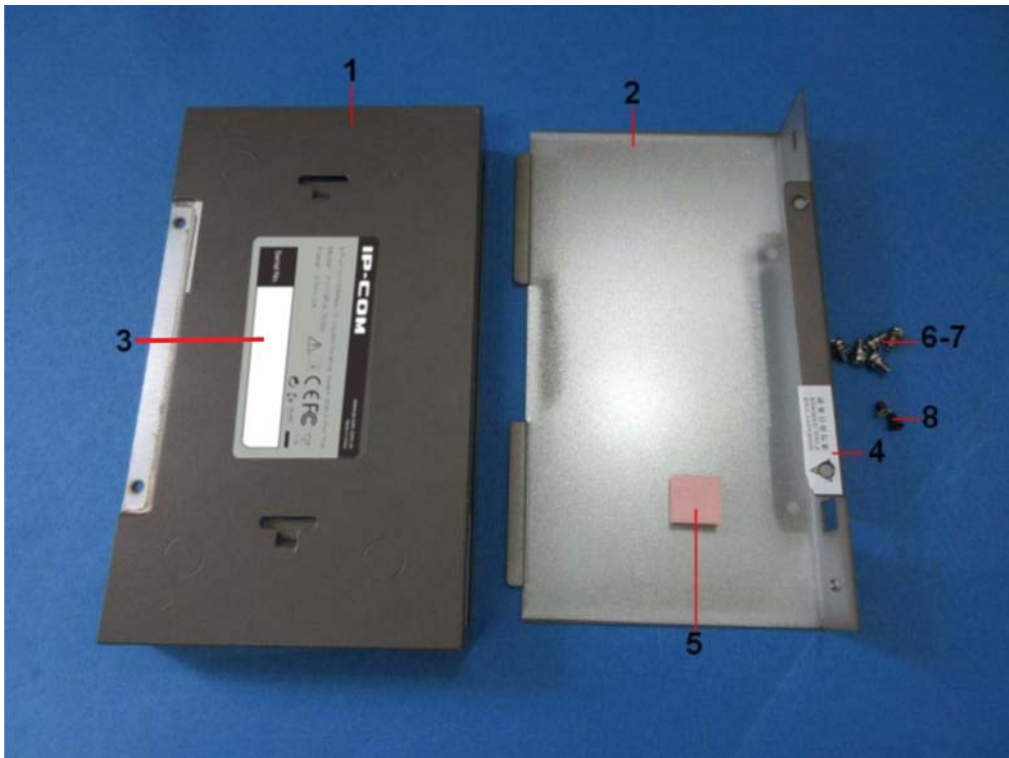
P = PASS; F = FAIL; D = DETECTED;

- (3) mg/kg = ppm; N.D. = NOT DETECTED (<MDL) Pb, Cd, Hg, Cr(VI): 2mg/kg; PBBs, PBDEs: 5mg/kg
- (4) According to IEC 62321-7-1:2015, result on Cr (VI) for metal sample is shown as Positive/Negative. Positive = Presence of Cr(VI) coating, Negative = Absence of Cr(VI) coating
- (5) #According to Annex III of European Council Directive 2011/65/EU, Electrical and electronic components containing lead in a glass or ceramic other than dielectric ceramic in capacitors, e.g. piezoelectronic devices, or in a glass or ceramic matrix compound is exempted.
- (6) ^According to Annex III of European Council Directive 2011/65/EU, Lead in high melting temperature type solders (i.e. lead-based alloys containing 85 % by weight or more lead) is exempted.

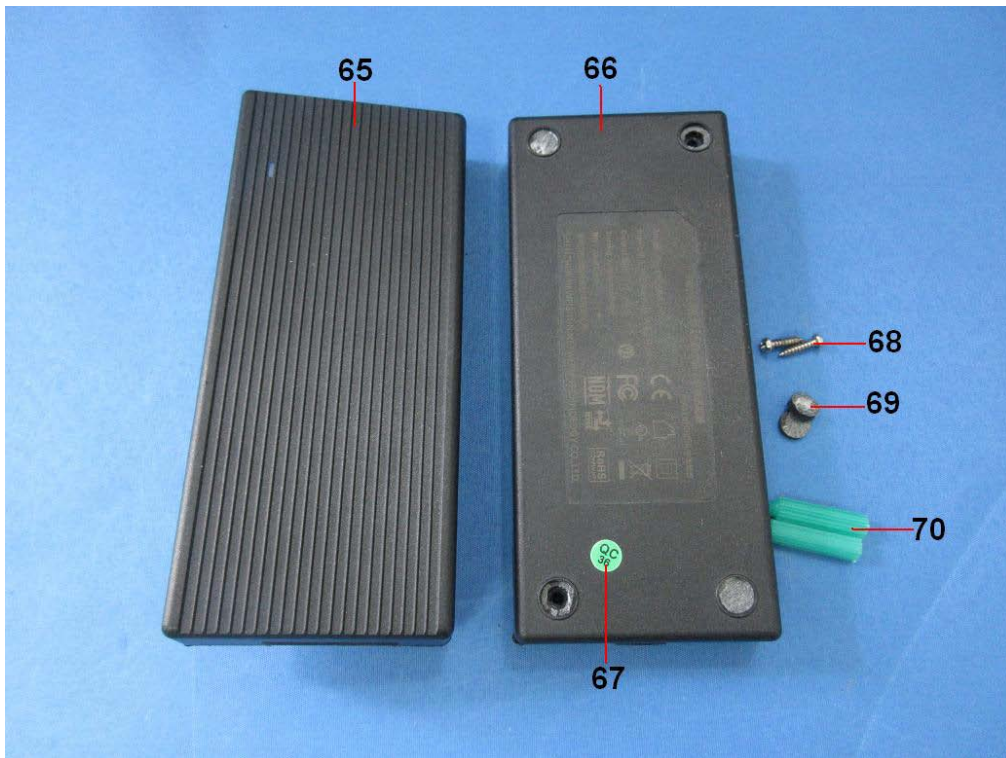
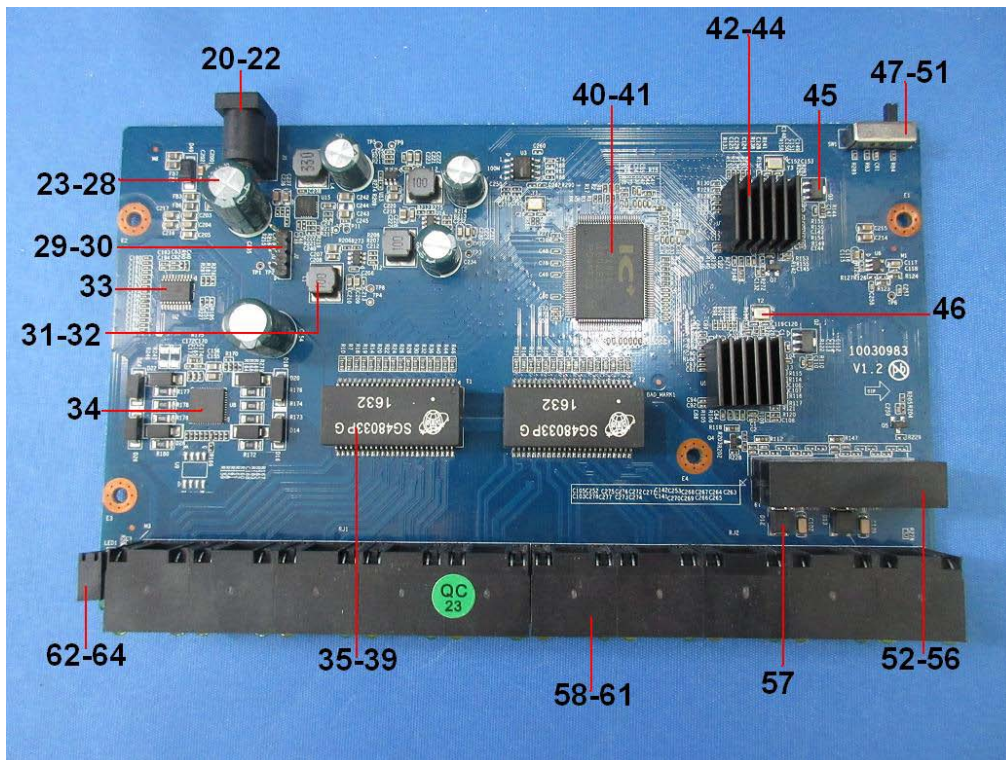
Sample photo



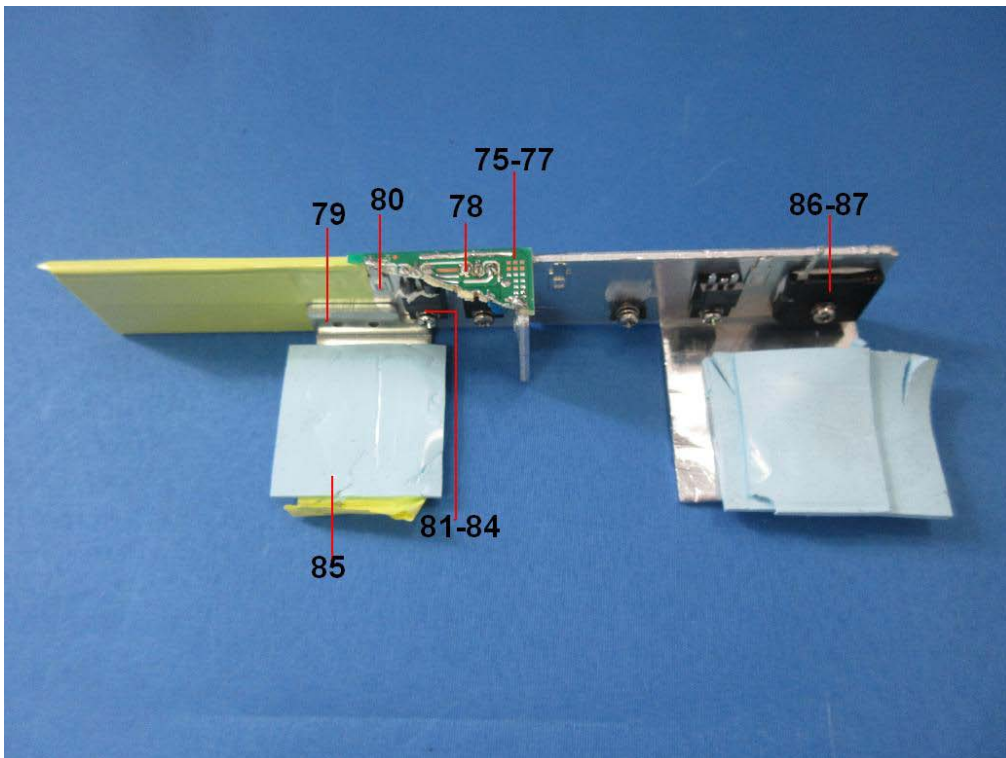
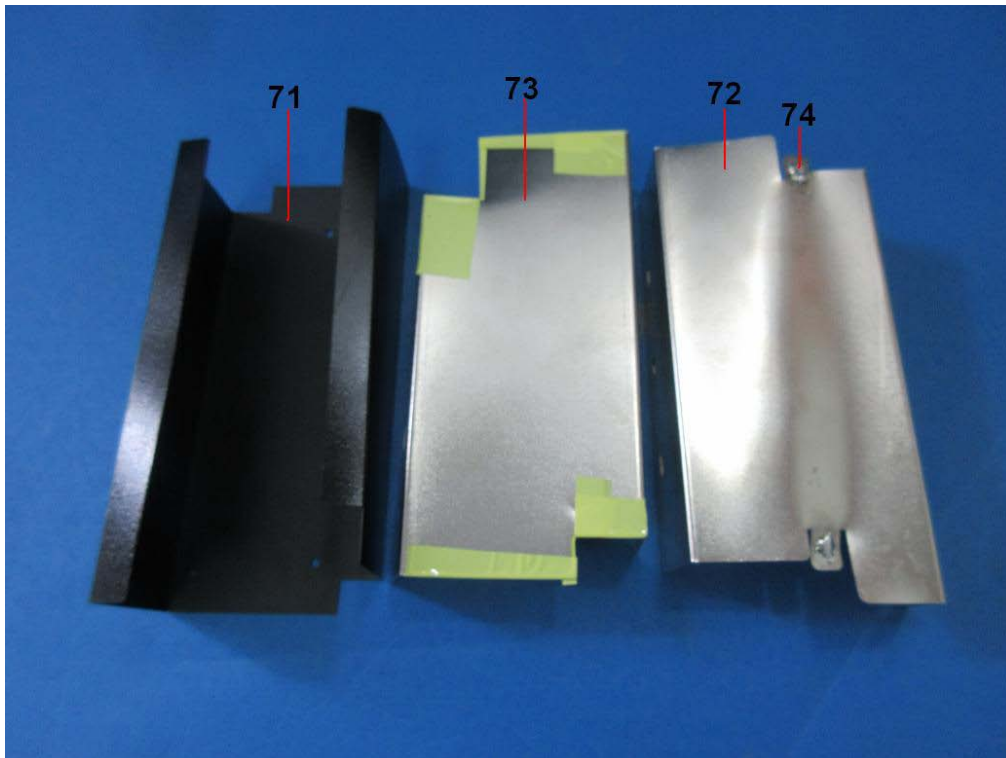
Detailed Split Chart



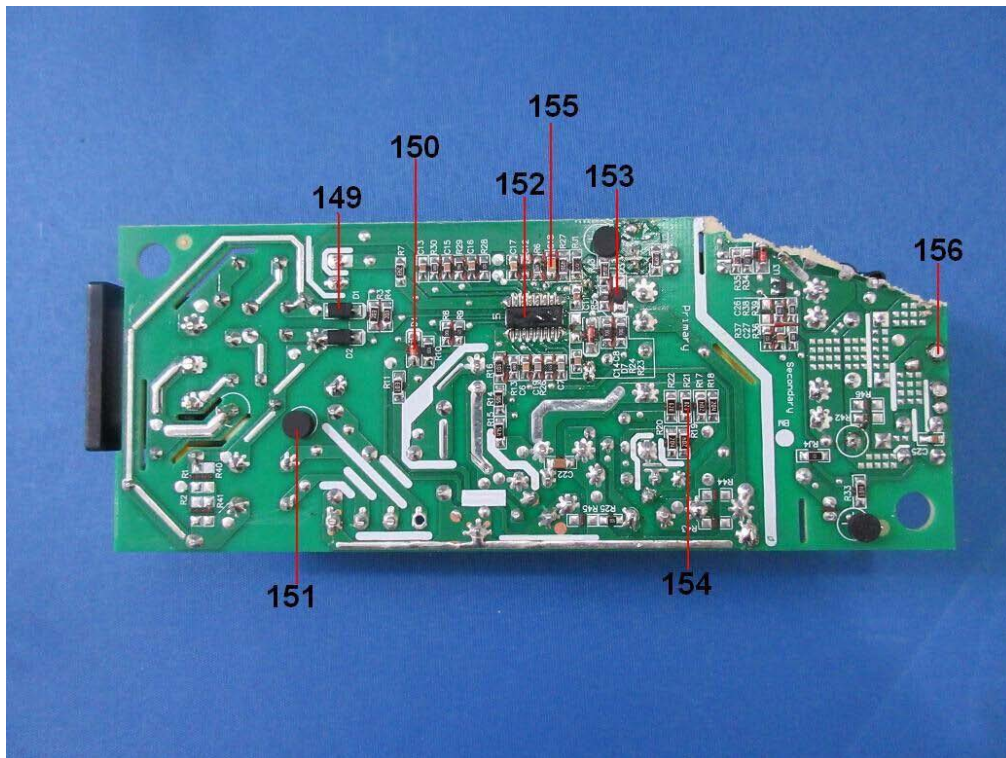
Detailed Split Chart



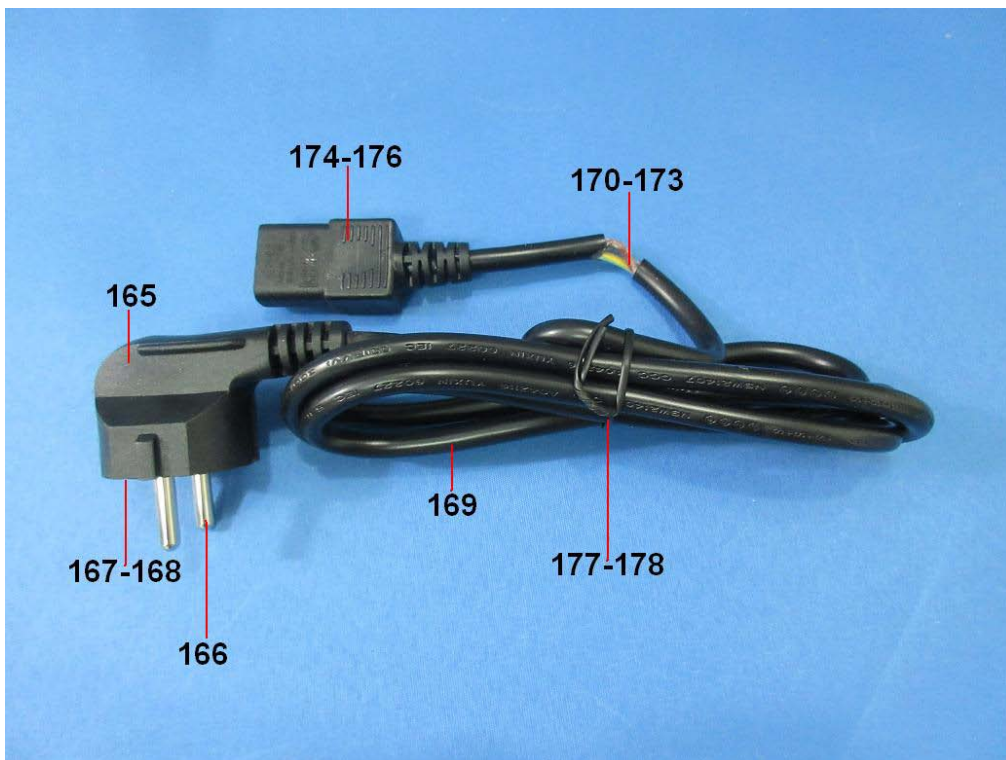
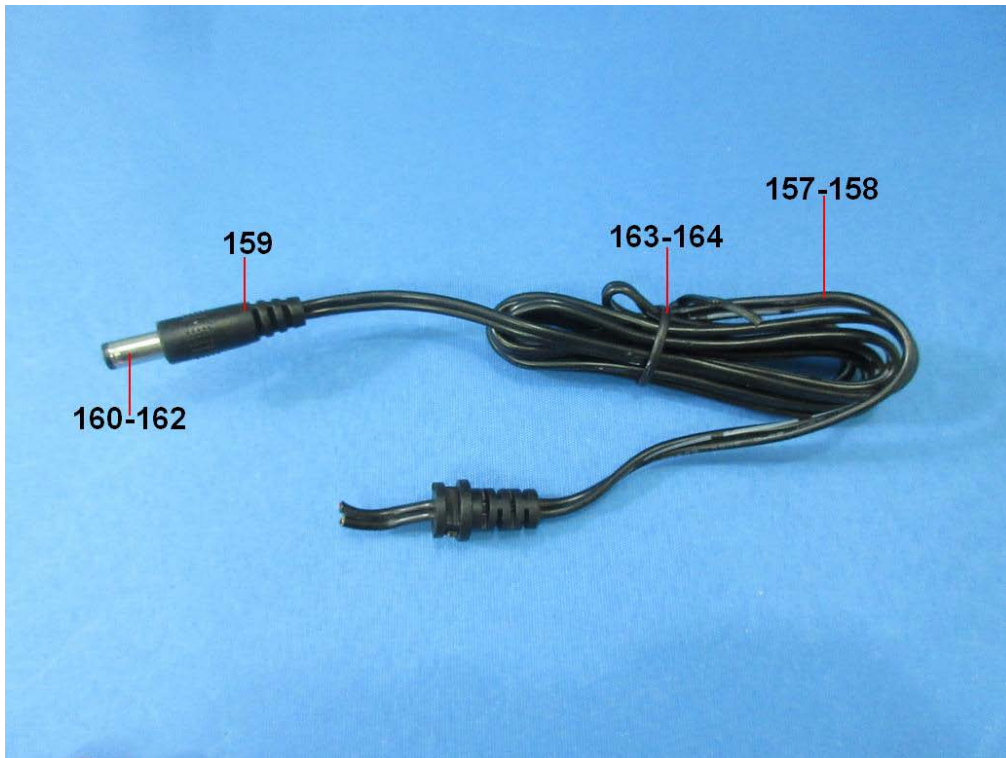
Detailed Split Chart



Detailed Split Chart



Detailed Split Chart





List of apparatus:

No.	Name	Model	Calibration Valid Date	USE(√)
1	ICP-OES	VISTA-MPX	2017/07/24	√
2	GC-MS	5975i	2017/07/24	√
3	UV-Vis	Lambda 25	2017/05/22	√
4	XRF	EDX3000B	2017/05/22	√

***** END OF REPORT *****

STATEMENT

1. The test report is invalid without stamp of laboratory.
2. The test report is invalid without signature of person(s) testing and authorizing.
3. The test report is invalid if erased and corrected.
4. Test results of the report is valid to the test samples if sampling by client.
5. “☆” item to be outside the scope of authorized by CNAS.
6. The test report shall not be reproduced except in full, without written approval of the laboratory.
7. If there is any objection to report, the client should inform issuing laboratory within 15 days from the date of receiving test report.